

Supplementary information to:

Letter to the editor:

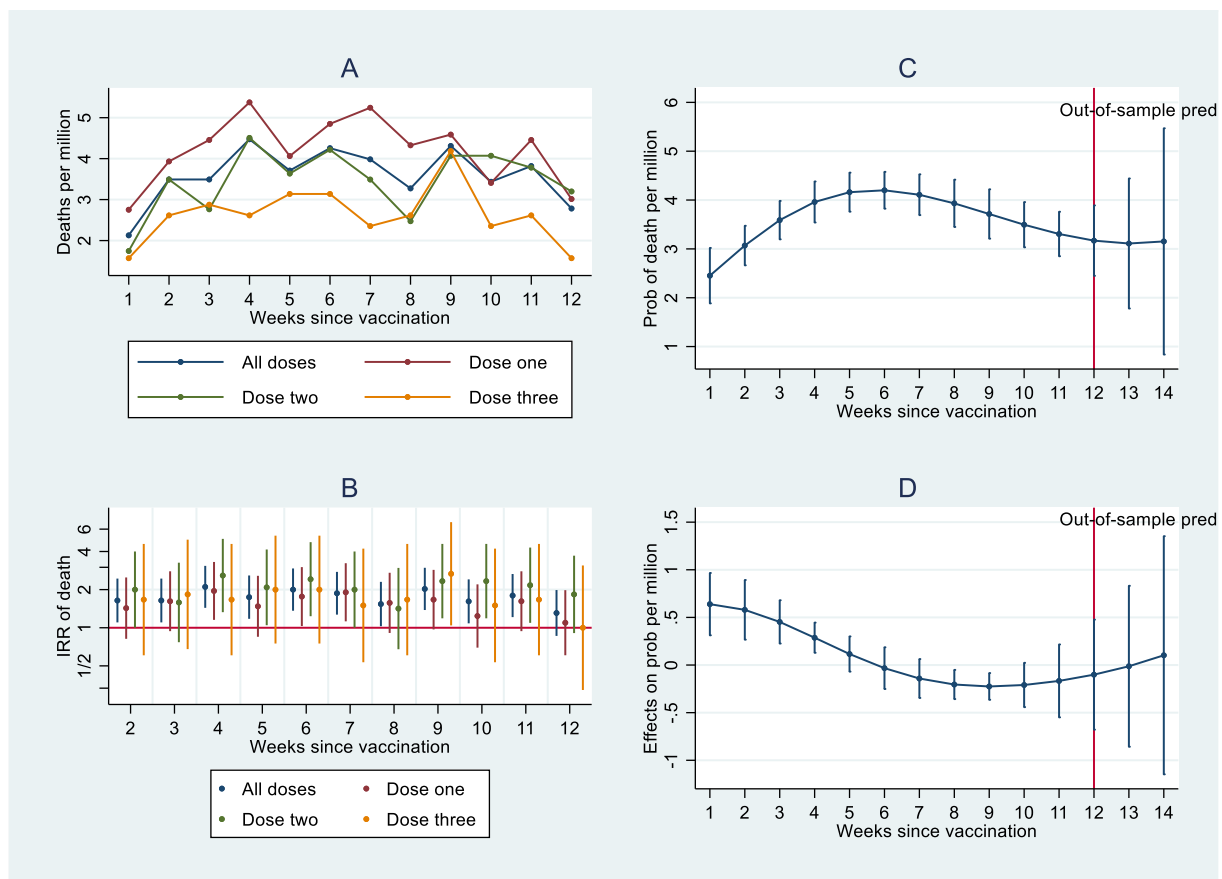
**DEATHS AMONG YOUNG PEOPLE IN ENGLAND INCREASED SIGNIFICANTLY IN 10 OF 11 WEEKS AFTER COVID-19 VACCINATION AND DOUBLED IN THREE**

Jarle Aarstad 

HVL Business School, Western Norway University of Applied Science,  
PO Box 7030, NO-5020 Bergen, Norway, E-mail: [jarle.aarstad@hvl.no](mailto:jarle.aarstad@hvl.no)

<https://dx.doi.org/10.17179/excli2024-7498>

This is an Open Access article distributed under the terms of the Creative Commons Attribution License (<http://creativecommons.org/licenses/by/4.0/>).



**Figure 1:** Deaths per million in each week since COVID-19 vaccination (A), IRRs of deaths in weeks since COVID-19 vaccination compared to week one with the vertical axis log-transformed (B), probability of death per million with weeks since vaccination as a continuous variable (C), and marginal effects on the probability of death per million with weeks since vaccination as a continuous variable (D). 95 % CIs are reported concerning B, C, and D.

**Table 1:** IRRs of deaths using negative binomial regression. Significant IRRs (95 % CIs) are in bold.

Week	All doses			Dose one			Dose two			Dose three		
	IRR	95% CIs		IRR	95% CIs		IRR	95% CIs		IRR	95% CIs	
1	Ref			Ref			Ref			Ref		
2	<b>1.64</b>	1.10	2.44	1.43	.818	2.50	<b>2.00</b>	1.00	4.00	1.67	.606	4.59
3	<b>1.64</b>	1.10	2.44	1.62	.940	2.79	1.58	.769	3.26	1.83	.678	4.96
4	<b>2.10</b>	1.44	3.08	<b>1.95</b>	1.15	3.30	<b>2.58</b>	1.33	5.03	1.67	.606	4.59
5	<b>1.74</b>	1.18	2.58	1.48	.848	2.57	<b>2.08</b>	1.05	4.15	2.00	.751	5.33
6	<b>2.00</b>	1.36	2.94	<b>1.76</b>	1.03	3.01	<b>2.42</b>	1.23	4.74	2.00	.751	5.33
7	<b>1.87</b>	1.27	2.76	<b>1.90</b>	1.12	3.23	<b>2.00</b>	1.00	4.00	1.50	.534	4.21
8	<b>1.54</b>	1.03	2.30	1.57	.909	2.72	1.42	.677	2.97	1.67	.606	4.59
9	<b>2.03</b>	1.38	2.97	1.67	.970	2.86	<b>2.33</b>	1.19	4.59	<b>2.67</b>	1.04	6.81
10	<b>1.62</b>	1.08	2.41	1.24	.697	2.20	<b>2.33</b>	1.19	4.59	1.50	.534	4.21
11	<b>1.79</b>	1.21	2.66	1.62	.940	2.79	<b>2.17</b>	1.09	4.29	1.67	.606	4.59
12	1.31	.862	1.98	1.10	.606	1.98	1.83	.907	3.70	1.00	.323	3.10
Dose one	Ref											
Dose two	<b>.821</b>	.705	.957									
Dose three	<b>.627</b>	.511	.769									