







**Supplementary information to:**

**Letter to the editor:**

**CURCUMIN LIPOSOMES ATTENUATE THE EXPRESSION OF  
CIGARETTE SMOKE EXTRACT-INDUCED INFLAMMATORY  
MARKERS IL-8 AND IL-24 *IN VITRO***

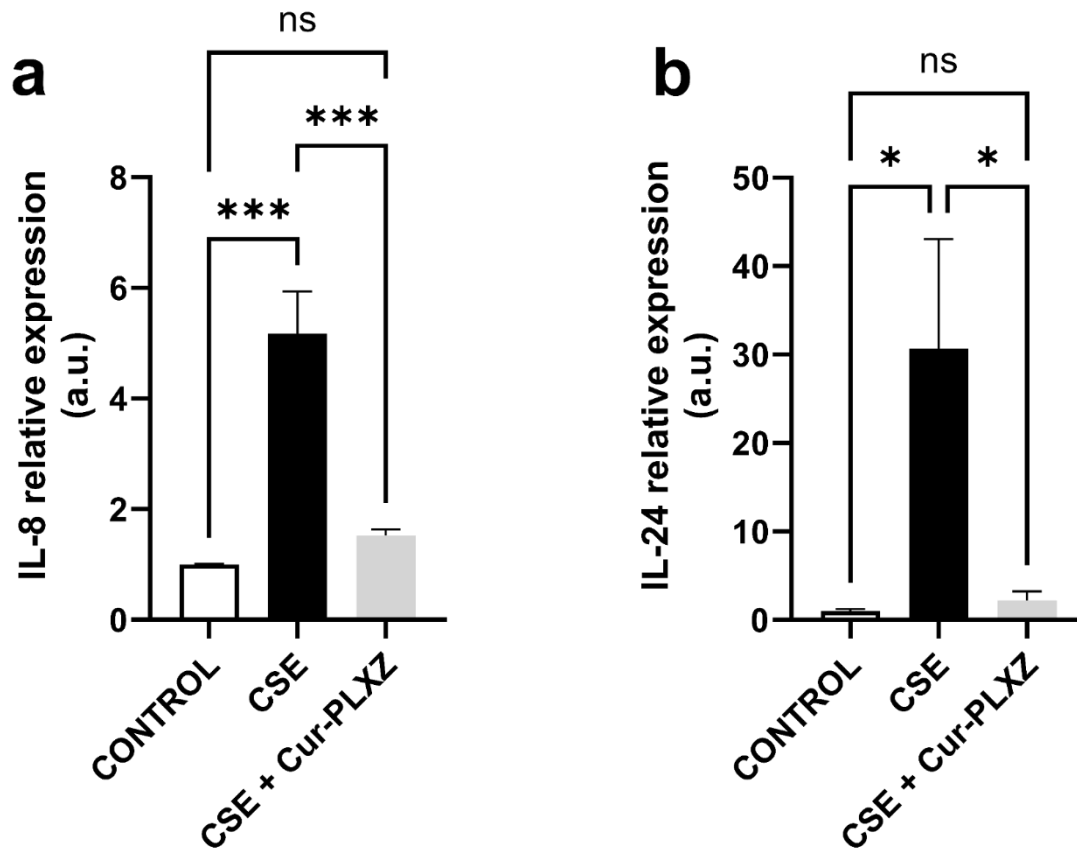
Vyoma K. Patel<sup>1,2,3</sup> , Sofia Kokkinis<sup>1,2,4</sup> , Gabriele De Rubis<sup>1,2</sup> ,  
Philip Michael Hansbro<sup>5</sup> , Keshav Raj Paudel<sup>5</sup> , Kamal Dua<sup>1,2,\*</sup> 

- <sup>1</sup> Discipline of Pharmacy, Graduate School of Health, University of Technology Sydney, Sydney, NSW 2007, Australia
- <sup>2</sup> Faculty of Health, Australian Research Centre in Complementary and Integrative Medicine, University of Technology Sydney, Ultimo, Australia
- <sup>3</sup> Faculty of Health and Medicine, School of Clinical Medicine, University of New South Wales, NSW 2052, Australia
- <sup>4</sup> Pharmako Biotechnologies, Frenchs Forest, NSW 2086, Australia
- <sup>5</sup> Centre for Inflammation, Centenary Institute and University of Technology Sydney, Faculty of Science, School of Life Sciences, Sydney 2007, Australia

\* **Corresponding author:** Dr. Kamal Dua, Discipline of Pharmacy, Graduate School of Health, University of Technology Sydney, Sydney, NSW 2007, Australia.  
E-mail: [kamal.dua@uts.edu.au](mailto:kamal.dua@uts.edu.au)

<https://dx.doi.org/10.17179/excli2024-7467>

This is an Open Access article distributed under the terms of the Creative Commons Attribution License (<http://creativecommons.org/licenses/by/4.0/>).



**Figure 1:** PlexoZome® curcumin counteracts the expression of IL-8 and IL-24 induced by CSE. BCI-NS1.1 cells were pre-treated with 2.5  $\mu$ M PlexoZome® curcumin for one hour followed by 5 % CSE exposure for further 24 hours. The relative expression of IL-8 (a), and IL-24 (b), was measured using a Proteome Profiler Human XL Cytokine Array kit. Statistical analysis was conducted using PRISM GraphPad by one-way ANOVA followed by Tukey's multiple comparison test. Values are expressed as mean  $\pm$  SEM (n=4). \*: p<0.05; \*\*\*: p<0.0001; ns: not significant