

Original article:

**IMMUNOAFFINITY PROTEOMICS FOR KIDNEY INJURY
BIOMARKERS IN MALE BEAGLE DOGS**

Wael Naboulsi¹, Hannes Planatscher¹, Felix F. Schmidt¹, Andreas Steinhilber¹,
Thomas O. Joos^{1,2}, Adeyemi O. Adedeji³, J. Eric McDuffie^{4,5}, Oliver Poetz^{1,2}

¹ Signatope GmbH, Reutlingen, Germany

² NMI Natural and Medical Sciences Institute at the University of Tuebingen, Reutlingen, Germany

³ Department of Safety Assessment, Genentech, A Member of the Roche Group, South San Francisco, CA, USA

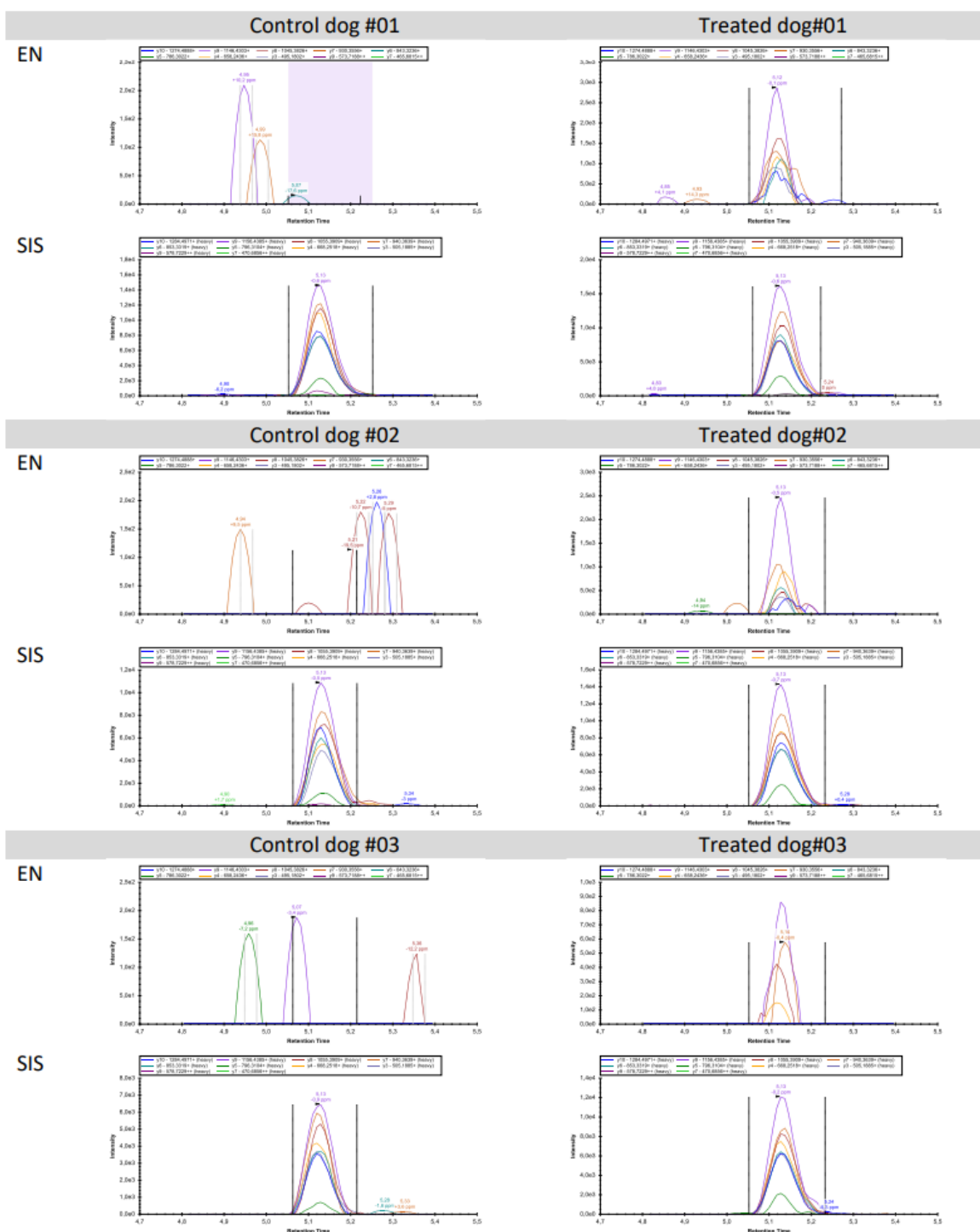
⁴ Janssen Pharmaceutical Research & Development LLC, San Diego, California, USA

⁵ Neurocrine Biosciences, Inc., San Diego, California, USA

* **Corresponding author:** Oliver Poetz, Signatope GmbH, Reutlingen, Germany,
E-mail: poetz@signatope.com

<https://dx.doi.org/10.17179/excli2023-6621>

This is an Open Access article distributed under the terms of the Creative Commons Attribution License (<http://creativecommons.org/licenses/by/4.0/>).



Supplementary Figure 1: This figure illustrates the base peak signal of KIM-1 in three control dogs and three treated dogs. The figure demonstrates a weak endogenous signal (EN) of KIM-1 in control dogs, while a more distinct signal is observed in treated dogs. The signal from the stable isotope-labeled standard (SIS) is comparable in both control and treated cases. All three treated animals #01, #02 and #03 had moderate tubular injury.