








Supplementary information to:

Original article:

**CYCLOPHOSPHAMIDE AND EPIRUBICIN INDUCE HIGH
APOPTOSIS IN MICROGLIA CELLS WHILE EPIRUBICIN
PROVOKES DNA DAMAGE AND MICROGLIAL ACTIVATION AT
SUB-LETHAL CONCENTRATIONS**

Rafael de la Hoz-Camacho^a , Ana Luisa Rivera-Lazarín^a , Jose Manuel
Vázquez-Guillen^a , Diana Caballero-Hernández^a , Edgar Mendoza-Gamboa^a ,
Ana Carolina Martínez-Torres^{a,+*} , Cristina Rodríguez-Padilla^{a,b,+} 

^a Universidad Autónoma de Nuevo León, Facultad de Ciencias Biológicas,
Laboratorio de Inmunología y Virología, Monterrey 66455, México

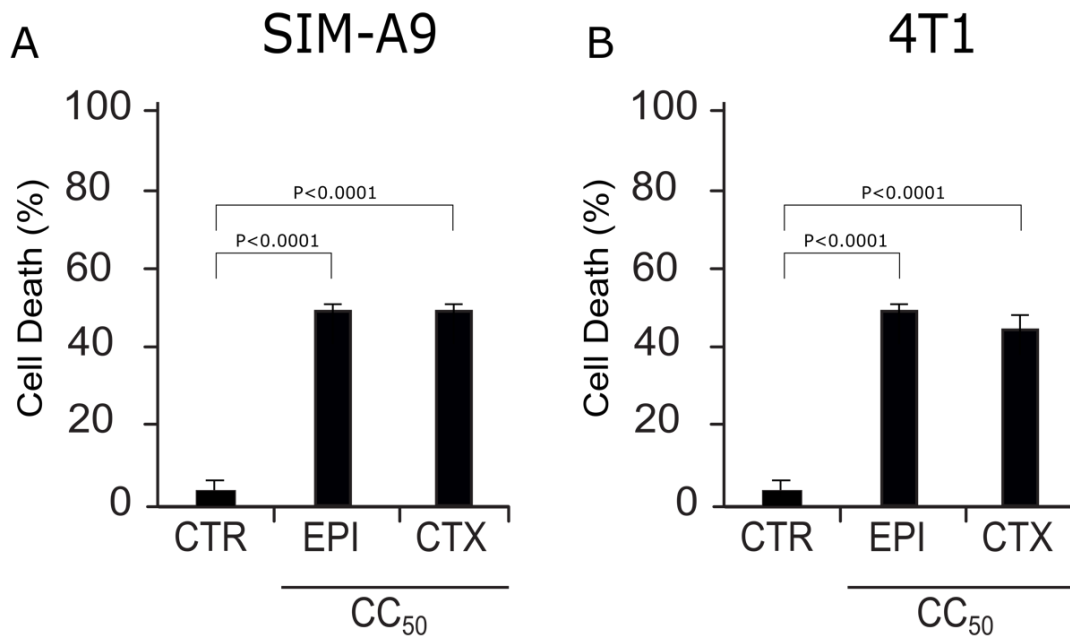
^b LONGEVEDEN S.A. de C.V.

⁺ These authors share equal co-seniorship.

* **Corresponding author:** Ana Carolina Martínez-Torres, Universidad Autónoma de
Nuevo León, Facultad de Ciencias Biológicas, Laboratorio de Inmunología y Virología,
Monterrey 66455, México. Tel +52 8 121 4115. Fax +52 818 352 4212.
E-mail: ana.martinezto@uanl.edu.mx

<https://dx.doi.org/10.17179/excli2021-4160>

This is an Open Access article distributed under the terms of the Creative Commons Attribution License
(<http://creativecommons.org/licenses/by/4.0/>).



Supplementary Figure 1: Cell death induced by EPI and CTX in SIM-A9 and 4T1 cells assessed with trypan blue. Cell death was measured in SIM-A9 and 4T1 cells treated with EPI CC₅₀ and CTX CC₅₀ for 24 hours, after which, cells were counted with trypan blue. **A)** Bar graphs represent the mean (\pm SD) of cell death observed by trypan blue after treatment with EPI CC₅₀ (1 μ M) and CTX CC₅₀ (15 mM) in SIM-A9 cells. **B)** Bar graphs represent the mean (\pm SD) of cell death observed by trypan blue after treatment with EPI CC₅₀ (5 μ M) and CTX CC₅₀ (30 mM) in 4T1 cells.