

## Review article:

# FOUNDATION AND METHODOLOGIES IN COMPUTER-AIDED DIAGNOSIS SYSTEMS FOR BREAST CANCER DETECTION

Afsaneh Jalalian<sup>1\*</sup>, Syamsiah Mashohor<sup>1</sup>, Rozi Mahmud<sup>2</sup>, Babak Karasfi<sup>3</sup>,  
M. Iqbal B. Saripan<sup>1</sup>, Abdul Rahman B. Ramli<sup>1</sup>

<sup>1</sup> Department of Computer and Communication Systems Engineering, Faculty of Engineering, Universiti Putra, Malaysia

<sup>2</sup> Department of Imaging, Faculty of Medicine and Health Science, Universiti Putra, Malaysia

<sup>3</sup> Department of Computer Engineering, Qazvin Branch, Islamic Azad University, Qazvin, Iran

\* Corresponding author: e-mail [Jalalian.afsaneh@gmail.com](mailto:Jalalian.afsaneh@gmail.com)

<http://dx.doi.org/10.17179/excli2016-701>

This is an Open Access article distributed under the terms of the Creative Commons Attribution License (<http://creativecommons.org/licenses/by/4.0/>).

## ABSTRACT

Breast cancer is the most prevalent cancer that affects women all over the world. Early detection and treatment of breast cancer could decline the mortality rate. Some issues such as technical reasons, which related to imaging quality and human error, increase misdiagnosis of breast cancer by radiologists. Computer-aided detection systems (CADs) are developed to overcome these restrictions and have been studied in many imaging modalities for breast cancer detection in recent years. The CAD systems improve radiologists' performance in finding and discriminating between the normal and abnormal tissues. These procedures are performed only as a double reader but the absolute decisions are still made by the radiologist. In this study, the recent CAD systems for breast cancer detection on different modalities such as mammography, ultrasound, MRI, and biopsy histopathological images are introduced. The foundation of CAD systems generally consist of four stages: Pre-processing, Segmentation, Feature extraction, and Classification. The approaches which applied to design different stages of CAD system are summarised. Advantages and disadvantages of different segmentation, feature extraction and classification techniques are listed. In addition, the impact of imbalanced datasets in classification outcomes and appropriate methods to solve these issues are discussed. As well as, performance evaluation metrics for various stages of breast cancer detection CAD systems are reviewed.

**Keywords:** breast cancer, computer-aided diagnosis system, segmentation, feature extraction, classification

## INTRODUCTION

Breast cancer is the most common cause of death after lung cancer in the world. Early detection and efficient treatment of breast cancer could increase the treatment options and decline the mortality rate. Different modalities such as mammography, ultrasound, and Magnetic Resonance Imaging (MRI) are the most effective tools in the early detection

of breast cancer. Issues such as technical reasons, which are related to imaging quality and human error have increased the misdiagnosis of breast cancer in radiologists' interpretation. In the effort to overcome such restrictions, CAD systems are developed to automated breast cancer detections and classify benign and malignant lesions. The CAD systems improve radiologists' performance in finding

and discriminating between the normal and abnormal tissues. These procedures are performed only as a double reader but the absolute decisions are still made by the radiologist.

Recent advances in the resolution of medical imaging modality have revolutionised the diagnostic accuracy. Efficient usage of imaging data to improve the diagnosis is very important. In recent years, computer-aided diagnosis systems (CADs) have developed a new context in radiology to take advantage of the data to be applied to different imaging modality and the diagnosis of different diseases. The efficiency of radiologists' interpretation can be improved in terms of accuracy and consistency in detection or diagnosis while productivity can be improved by reducing the time required to read the images (Doi, 2009). The outcomes are derived using various techniques in computer vision to present some of the significant parameters such as the location of suspicious lesions and the likelihood of malignancy of the detected lesions.

In relation to breast cancer, the main objective of CAD system is to design accurate and reliable approach, to decrease observational oversights and assist in discriminating benign and malignant lesions. In the following, we present some of the recent proposed CAD systems for breast cancer detection or diagnosis on various modalities such as mammography, ultrasound, MRI, and biopsy histopathological images.

### **Mammography**

Mammography is a dedicated imaging modality for breast screening that uses low-dose X-ray during breast examination. Mammography is currently the most effective tool for early detection of breast cancer; however, it has some restrictions. Breast density is a variety of confounding factors that make diagnosis of breast cancer more difficult in women with dense breasts (Ertosun and Rubin, 2015). The contrast between cancer and background in dense breast image is very low, which can affect the diagnosis outcome (Longo et al., 2014). In the mammographic examination, non-cancerous lesions can be misinterpreted

as cancer (false-positive value), while cancers may be missed (false-negative value). As a result, radiologists fail to detect 10 % to 30 % of breast cancers (Bird et al., 1992; Boyd et al., 2007; Kerlikowske et al., 2000). The false-positive value indicates the percentage of lesions that are found to be cancerous and subjected to biopsy. The miss rate in mammography has increased in dense breasts where the probability of cancer is four to six times higher than in non-dense breasts (Boyd et al., 2007; Maskarinec et al., 2007; Nelson et al., 2009). Several solutions have been proposed to enhance the specificity and sensitivity of mammography as well as to decrease unnecessary biopsies procedure.

Double reading is one of the solutions that can significantly contribute to achieving high sensitivity and specificity (Dinnes et al., 2001; Warren and Duffy, 1995). Additional costs will be imposed on the patients for double reading of mammography. CAD systems can be considered as an alternative framework that acts as a second reader to enhance the performance of physician's interpretation. The studies (Balleyguier et al., 2005; Sanchez Gómez et al., 2011; Malich et al., 2000; Marx et al., 2004) have shown that the attention to use a computer to improve the performance of physicians to detect mass and micro-calcification in mammography has increased in recent years. Gilbert et al. (2008) indicated that proportion of cancer detected was 199 of 227 (87.7 %) for double reading and 198 of 227 (87.2 %) for single reading with CAD system. The perspective assessment of the impact of CAD systems on interpretation mammogram images has been performed on a community of breast cancer patients (Freer and Ullissey, 2001). Among 12,860 mammograms, the radiologist's performance was measured without CAD and with CAD. The recall rate increased from 6.6 % to 7.7 % and the proportion of early-stage malignancy detected the growth from 73 % to 78 %, which represents an increase in efficiency in the detection of cancer with the usage of CAD system.

Micro-calcifications and masses are the two most significant signs of malignancy. Breast calcification is tiny specks of calcium which are scattered in the breast. In order to classify micro-calcification in benign and malignant, different properties such as size, shape, distribution pattern, density, and a number of micro-calcifications are analysed (Mousa et al., 2005). Detection of micro-calcifications is a difficult task and the hardship increases in mammogram interpretation in young women due to the contrast reduction among micro-calcification and adjacent tissue (Nunes et al., 2007). Rizzi et al. (2012) have provided a valuable study on techniques for suppressing noise, enhancing contrast, and extraction; and classification of micro-calcification.

Another lesion in the breast is mass, which; is a circumscribed lump in the breast and might be categorised to be benign or malignant. Masses are characterised by various attributes such as shape (round, lobular, oval, irregular), margin (obscured, indistinct, and speculated), size, location, and their contrast. Mass detection is more difficult compared to micro-calcification because of the similarity and ambiguity of their characteristics with the normal tissue (Islam et al., 2010; Kozegar et al., 2013). Masses are generally observed in the dense regions of the breast with smoother boundary rather than micro-calcification (Kozegar et al., 2013). Due to these factors, mass detection is a challenging task for radiologists. In the past two decades, researchers have conducted a lot of effort for developing automatic systems to help radiologists in the detection and diagnosis of mass on mammography image. Oliver et al. (2010) have presented an exhaustive study of CAD systems for the detection and segmentation of mass from mammogram images. In this study, the introduction of current systems for mass detection and the used strategies as well as a quantitative comparison of a few methods are provided.

Although mammography is a proven modality for mortality reduction in breast cancer, one of the noteworthy points is low sensitivity

and specificity in young women and dense breast (Boyd et al., 2007; Maskarinec et al., 2007; Nelson et al., 2009). Low specificity in screening mammography may cause some unnecessary biopsy (Jesneck et al., 2007). This restriction increases the cost and stress imposed on the patient. Consequently, to gain high precision in mammography screening alone is difficult. Some observational studies have shown improve screening sensitivity in women with dense breast, through adjunct mammography with ultrasound (Berg et al., 2008; Corsetti et al., 2011; Drukker et al., 2013; Nothacker et al., 2009; Ohuchi et al., 2016; Scheel et al., 2015).

### **Ultrasound**

Ultrasound is a beneficial tool to evaluate breast issues and to follow up finding in physical exam or mammography. It is also recommended for breast screening during pregnancy and lactation. Ultrasound is suggested before diagnostic fine needle biopsy and it can be used for biopsy guidance and mass locating. Although ultrasound is less sensitive than MRI, it has converted a valuable tool as an adjunct to mammograms due to its availability, non-invasive, and costs effective than other options. The development of colour Doppler imaging and ultrasound echo-enhancing (contrast agents) provides additional information of anatomical and vascular flow related, which assists the differential diagnosis of breast lesions (Svensson, 1997).

The studies indicate that ultrasound is able to detect and discriminate benign and malignant masses with high accuracy and also reduce the number of unnecessary biopsies (Chen et al., 2003; Sahiner et al., 2007). Ultrasound is more sensitive for detecting invasive cancer in dense breasts (Costantini et al., 2006; Drukker et al., 2002). However, it is an operator-dependent modality and the interpretation of its images requires expertise on the part of the radiologist. In order to overcome the operator dependency and increase the accuracy of diagnosis rate, computer-aided detection/diagnosis (CAD) systems are devel-

oped for breast cancer detection and classification on ultrasound images. Recently, several CAD systems have been proposed to reduce the influence of dependence on the operator in ultrasound and increase the diagnosis sensitivity and specificity (Huang et al., 2004, 2006; Kim et al., 2014). CAD systems have been presented on Automated Breast Ultrasound (ABUS) (Kim et al., 2014). The CAD system is evaluated on a dataset that involves 20 cysts, 42 benign lesions, and 27 malignant lesions. The sensitivity achieved by this system was 82.67 percent and the false positive rate was 0.26 per image.

The efficiency of CAD software is generally higher to detect lesion with a high risk of malignancy in contrast to the benign lesion (Chabi et al., 2012; Horsch et al., 2004). Chabi et al. (2012) have presented the results of ultrasound image analysis with and without CAD system by junior radiologists to detect breast cancer. With the high sensitivity (95 %) and low specificity (48 %) achieved in this research, it appears that CAD system is a useful tools for image interpretation for the junior radiologist in training.

### ***Magnetic Resonance Imaging (MRI)***

Since nearly three decades, MRI screening has been employed for detection and diagnosis of breast cancer lesions (Heywang et al., 1989). Breast MRI is a potential alternative, but the cost is higher than other imaging methods and not widely available as ultrasound and mammography. MRI is suggested for screening women who have a high risk of developing breast cancer, or it can be used to investigate suspicious areas found by the mammogram to help measure the size of the mass. Breast MRI is advised to women with family history of breast cancer and has a high rate of sensitivity (78-98 %) and low specificity (43-75 %) (Kuhl, 2007). The interpretation process of MRI image is very time-consuming and requires a high level of radiologist experience to detect and differentiate benign and malignant lesions (Meeuwis et al., 2010). In recent studies, computer systems have been developed to facilitate MRI image

analysis and improve the diagnosis productivity (Meeuwis et al., 2010; Wang et al., 2009; Williams et al., 2007).

### ***Biopsy***

Biopsy is the final stage when a mammogram or other imaging modalities found any type of abnormality. During a biopsy, a sample is taken from suspicious lesion in order to conduct microscopic observation. There are several types of biopsies such as fine needle aspiration biopsy (FNAB), core biopsy, or surgical biopsy. FNAB is a common type of biopsy and during the examination; a cytological sample is obtained from the tumour and explored under a microscope to determine the occurrence of cancer cells. The main disadvantage of FNAB is that the needle cannot extract sufficient amount of tissue for diagnosis. Detection of cancer cells requires profound knowledge and sufficient experience in the field of histopathology (Filipczuk et al., 2012). A vision-based computer system to automatically detect the cancer cells can help specialists to discriminate cancer from non-cancer cells.

In contrast to other CAD systems, fewer studies performed the analysis of breast histopathology images. Issac Niwas et al. (2012) have used Log-Gabor wavelet transform base decomposition method for histopathological images on HSV (Hue, Saturation, Value) colour space. The accuracy obtained by Least squares Support Vector Machine (LS-SVM) in this study was 98.3 %. Another study has applied the Genetically Optimized Neural Network (GONN) algorithm for diagnosis on histopathology images (Bhardwaj and Tiwari, 2015). They achieved an average accuracy of 97.73 %, 99.11 %, and 99.21 % for 50–50, 60–40 and 70–30 training–testing partitions respectively, and 99.26 % for 10-fold cross validation structure.

## CORNERSTONES OF A CAD SYSTEM

Medical image processing requires prior knowledge on the content and nature of image to select appropriate methods to implement the CAD system. In order to achieve a high level of efficiency for automated diagnosis, it is significant to employ efficacious image processing approaches in the main steps of CAD system. Commonly, the CAD systems consists of four stages as shown in Figure 1.

A brief description of the main stages of a CAD system is provided as follows:

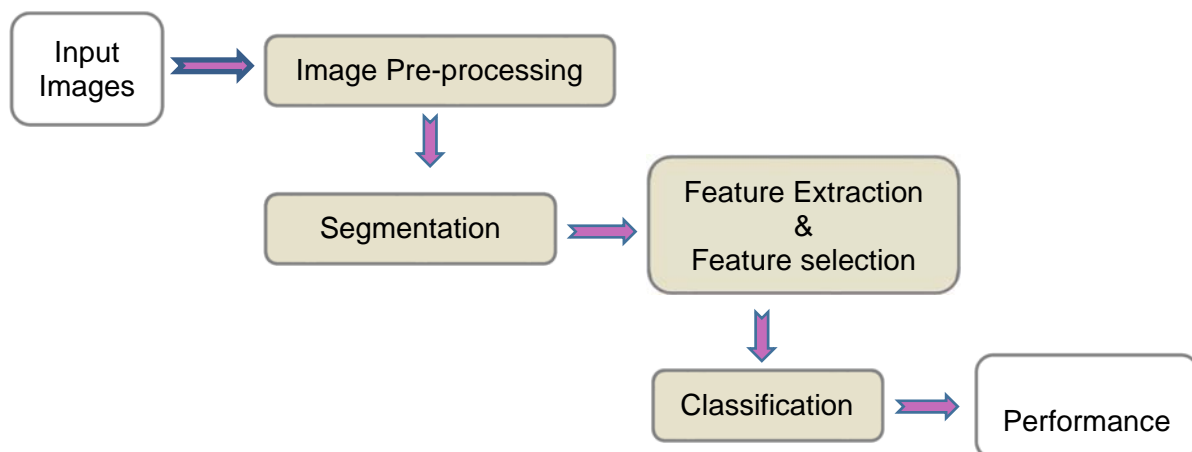
- (1) **Image pre-processing:** This step is essential for some modality such as ultrasound for the purpose of enhancing the image and reducing the noise with minimum distortion of image features. Some of the CAD systems do not have a pre-processing stage.
- (2) **Image segmentation:** Image segmentation is a vital step towards efficient development of CAD systems. The main purpose of segmentation is the separation of the region of interest (ROI) commensurate with the desired properties (Nie, 2009). Recently, imaging modalities such as magnetic resonance imaging (MRI), computed tomography (CT), 3D ultrasound, and many more modalities are capable of producing images in the form of 3D. Therefore, 3D segmentation methods

are desirable for more accurate segmentation in volumetric imagery.

- (3) **Feature extraction and selection:** In this step, different features are extracted according to the characteristics of lesions from the image. These features are used to distinguish benign or malignant lesions. The feature set is usually very large and the selection of the most effective features is very critical for the next step.
- (4) **Classification:** According to the selected features, the suspicious areas are classified to benign or malignant based on different classification techniques. The common classification methods used in medical imaging are presented in this section.
- (5) **Performance evaluation:** This step evaluates the performance of CAD system.

### *Image pre-processing*

In medical image processing, image pre-processing plays a significant role to achieve the ideal outcomes in other stages of a CAD system such as segmentation and feature extraction. Pre-processing stage is performed to remove noise and defect caused in image acquisition procedure, image resizing, and enhance the image intensity (Kyaw, 2013).



**Figure 1:** Overall view of CAD system for breast cancer diagnosis

### **Image segmentation**

Image segmentation is a crucial component in computer vision and pattern recognition. Accurate segmentation plays a significant role in the success or failure of the computerised procedure. In medical imaging aspect, the selection of segmentation methods are widely depending on the specific application and imaging modality. With increased dimension and resolution of the image in various modalities, the images cannot be manually examined with regard to the huge amount of image information. Segmentation techniques help to highlight significant regions and extract various structures such as organs or tumours for further examination.

Segmentation methods are categorised generally into two groups: semi-automatic and fully automatic. Providing an automatic algorithm in medicine to detect and localise abnormality is highly desirable. In medical application, the low rate of false positive and false negative detection is very important. Therefore, evaluation methods of segmentation algorithms is another dimension of CAD systems in the practical aspect.

Segmentation approaches based on image properties are broadly arranged into two groups: discontinuity-based approach and similarity-based approach. Discontinuity-based approach partitions an image based on an abrupt change in intensity (Rastgarpour and Shanbehzadeh, 2011), while similarity-based method partitions an image according to pre-determined similarity criteria. The similarity-based method is categorised into region-based, thresholding-based, and clustering-based methods (Lee et al., 2015). The overall view of segmentation techniques is shown in Figure 2. A general comparison of segmentation methods (Lee et al., 2015; Narkhede, 2013) are provided in Table 1.

### **Edge-based segmentation methods**

Edge-based segmentation methods are a structural technique to detect edges or pixels among different regions that have abrupt intensity change (Pal and Pal, 1993). The edge-based method works well on high contrast and non-noise images. There are several methods for edge-based segmentation such as Sobel, Prewitt, Laplace, Canny, and Laplacian of Gaussian (Dromain et al., 2013). The main application of edge-based segmentation techniques is human organ recognition. A mathematical morphological edge detection algorithm has been presented in (Yu-qian et al., 2006) to detect lungs in CT images that contain salt-and-pepper noise. Haris et al. (1998) have proposed an integration of edge-based and region-growing with watershed transform for 2D/3D segmentation of magnetic resonance images.

### **Thresholding-based segmentation methods**

One of the wide methods used for image segmentation is a thresholding-based technique which is an effective way to discriminate foreground from the background image (Zhang, 2006). The first step in this method is the selection of an appropriate threshold value according to image properties, and then the pixels image is assigned to specific regions. The automatic selection of threshold value requires the knowledge on the intensity characteristics of the objects, sizes of the objects, and the number of various types of objects existing in the image (Al-Amri and Kalyankar, 2010).

The thresholding-based methods have been widely used to develop CAD systems in order to extract significant areas for additional analysis. In the article of Al-Bayati and El-Zaart (2013), various thresholding techniques have been compared to segmentation mammogram images. An automatic nucleus segmentation is developed on the image of breast histopathology using histogram-based thresholding (Saha et al., 2015). The result shows 97 % accuracy in nucleus detection.

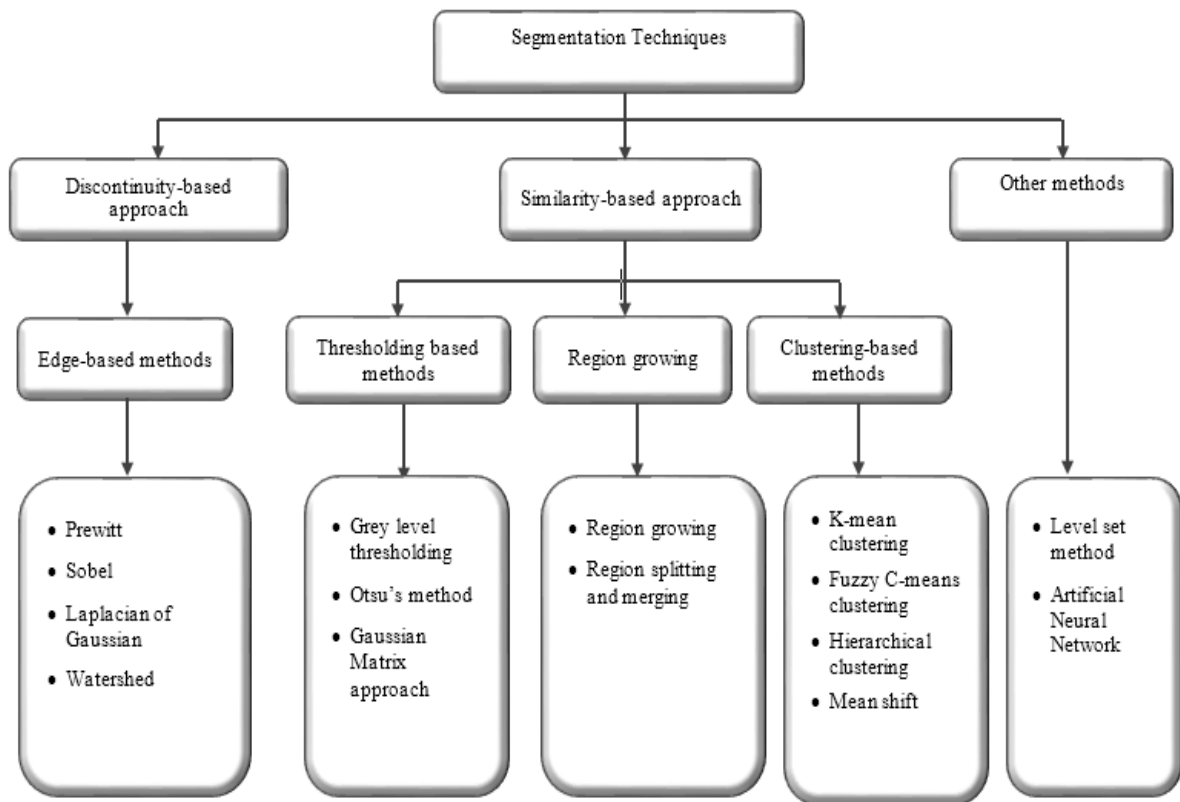


Figure 2: Overall view of segmentation techniques

Table 1: Comparison of segmentation techniques

Segmentation techniques	Description	Advantage	Disadvantage
Region-based approaches	Grouping pixels in homogeneous regions based on seed points	Simple concept It performs well with respect noise We can choose multiple criteria at the same time	Dependence to selected seed points In terms of computation time and memory are expensive
Thresholding-based approaches	Achieve threshold value based on peaks and valleys in the histogram of images which corresponds to regions	Works well with low computation complexity in most of the images Simplicity of threshold calculation	Does not work well in images with close colour spectrum
Edge-based approaches	It works based on identify sharp discontinuities in the image	Easy to perceive for human Works well for image with good contrast	Very sensitive to noise Does not work well on images with low contrast and smooth change
Clustering-based approaches	Categorise objects into the specific groups based on their similarity	Easy task to implementation	How to define number of clusters

### *Region growing segmentation methods*

The region-based segmentation methods divide an image into homogeneous regions of connected pixels based on predefined criteria such as intensity, colour, or texture. Region-based approaches are broadly classified into two groups: region growing and region split and merging (Narkhede, 2013). Seed selection is the first step in the region growing segmentation methods. The initialisation of seed-point is crucial and effective on the result of segmentation. In contrast with the region growing, region split and merging is a top-down approach. The procedure starts with a whole image and partitioning to achieve more homogeneous regions. Appropriate regions with similar criterions can be merged into one region.

In recent years, region-based segmentation algorithms are widely used to develop CAD systems for breast cancer detection. A region growing approach is applied to the extraction of a region of interests (ROIs) in this article (Rouhi et al., 2015). Another adaptive region growing scheme with the composition of hybrid assessment function, maximum likelihood analysis, and maximum gradient analysis is produced in this study (Cao et al., 2010). Split and merging algorithm is employed in this paper (Rundo et al., 2016) based on the seed selection by an adaptive region growing procedure.

### *Clustering-based segmentation methods*

Clustering-based segmentation methods are popular techniques in medical image segmentation and generally categorised into hierarchal and partitional clustering (Jain, 2010). Hierarchal clustering algorithms are a recursive process which is able to find nested clusters in agglomerative (bottom-up) or divisive (top-down) method. In comparison with hierarchal clustering, partitioning clustering techniques are an iterative procedure which can be divided into hard clustering and fuzzy clustering (De Carvalho et al., 2012). In hard partitioning methods, each object is allocated in only one cluster, whereas, in fuzzy clustering, a set of membership levels associated

with each element and each element can belong to more than one cluster. K-means and fuzzy C-means clustering are well-known techniques for hard and fuzzy clustering respectively.

Clustering methods are potentially very beneficial in clinical image segmentation. Authors have presented adaptive K-means clustering technique (Moftah et al., 2014) and Fuzzy C-Means (FCM) clustering (Sathya et al., 2012) on MRI breast images. In Table 2 a few examples of segmentation methods in breast CAD systems collected are shown.

Recently, imaging modalities such as magnetic resonance imaging (MRI), computed tomography (CT), 3D ultrasound, CTLM and many more modalities are capable of producing images in the form of 3D. Therefore, 3D segmentation methods are desirable for more accurate segmentation in volumetric imagery. Some approaches have been proposed on different modalities such as breast MRI (Song et al., 2015) and automated 3D breast ultrasound (Moon et al., 2013; Tan et al., 2015, 2013).

The development of reconstruction algorithms has been the attention of many researchers in latest work since the reconstruction of 3D images for consecutive images, due to its various applications in surgery, teaching anatomy, and diagnosis (Li et al., 2015). In the field of breast screening, segmentation and 3D reconstruction of Magnetic Resonance Image (MRI) (Gnonnou and Smaoui, 2014) and mammogram (Yong et al., 2015) are offered for breast cancer detection.

### *Feature extraction*

Computing feature descriptors from an image to reduce the volume of data ordinarily signifies feature extraction. Features are characteristics of the whole image or region of interests. The proper selection of features has an important influence on (1) memory size, (2) accuracy of classification, (3) computational cost of classification and (4) robustness. Feature descriptors and metrics widely depend on the specific application. Generally, image de-



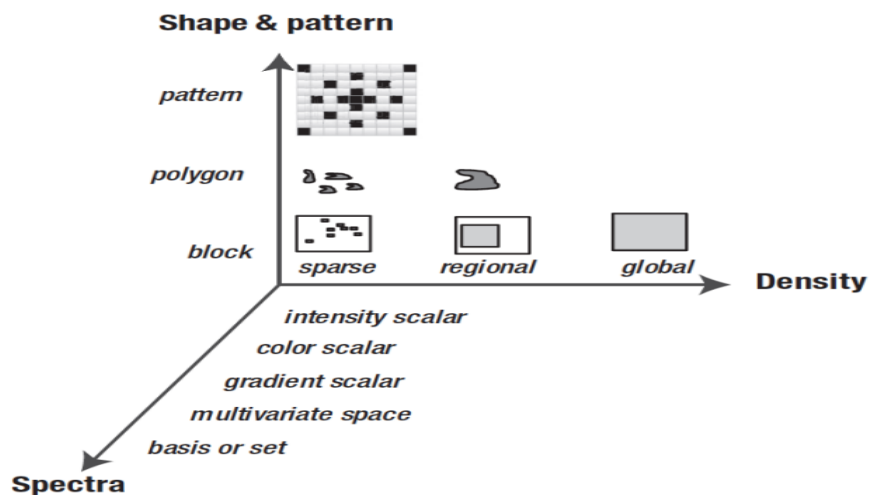
scriptors are divided into the three dimensions. Figure 3 shows a feature taxonomy (Krig, 2014) based on feature descriptor dimensions using three axes: shape, pattern and spectra, and density.

According to the literature (El Atlas et al., 2014; Martinez, 2004), image descriptors are placed in three categories, namely shape-based, textural, and colour-based descriptor,

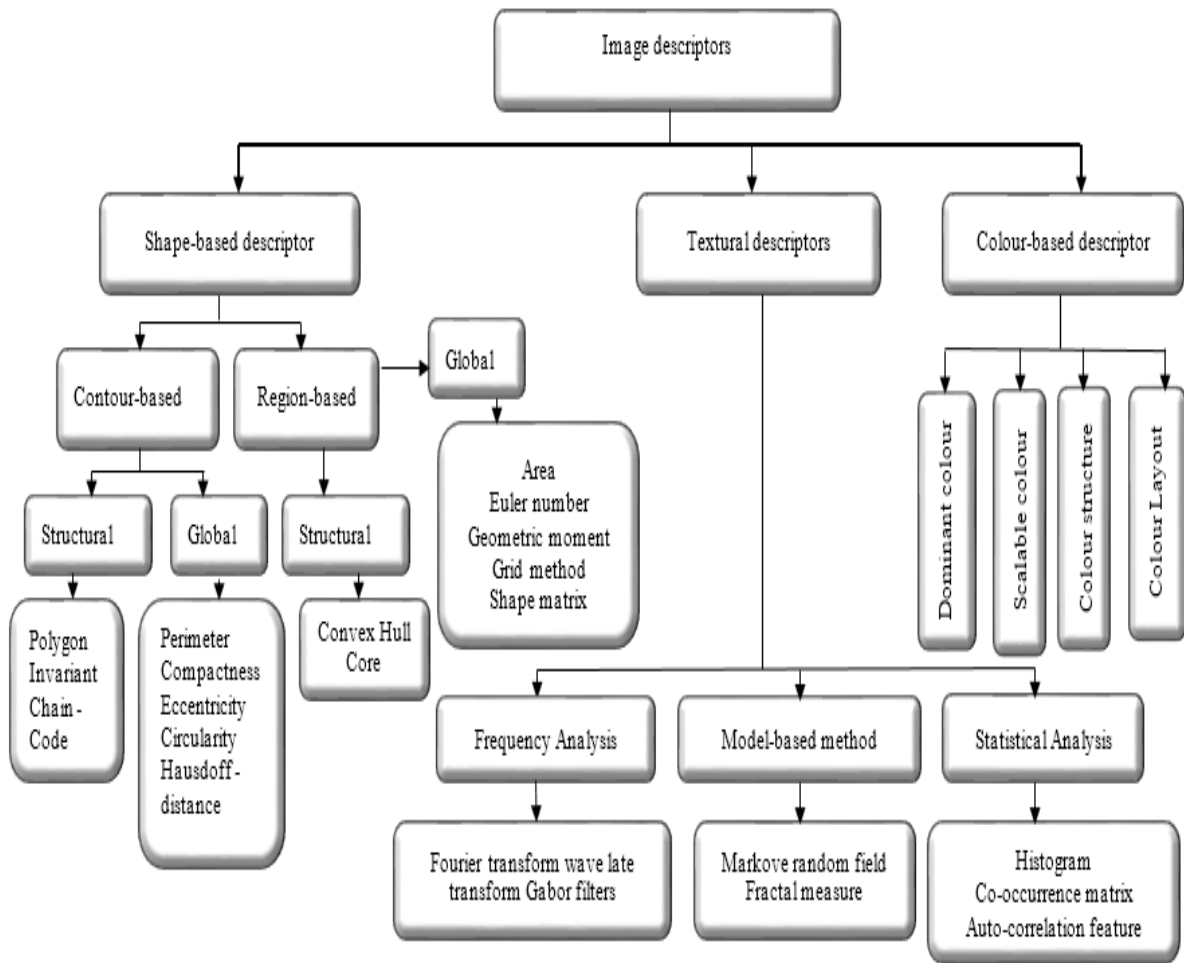
which is shown in Figure 4. Shape features are the important properties employed by human to discriminate objects with other features such as colour and texture. To address the complexity conversion of shapes, an effective shape descriptor should be invariant into the rotation and scaling.

**Table 2:** Segmentation techniques on recent studies in computer-aided diagnosis for breast cancer

Reference	Method	Accuracy
Al-Faris et al., 2014a	Modified automatic Seeded Region Growing based on PSO	Relative overlap (mean) = 0.704 True negative fraction (mean) = 0.851 True positive fraction (mean) = 0.792 Misclassification Rate (mean) = 0.209
Kim et al., 2014	Adjusted Otsu's threshold	Sensitivity /Segmentation: Benign=90.47 % Malignant=92.59 % Sensitivity / Classification = 82.67 %
Dheeba et al., 2014	Particle Swarm Optimized Wavelet Neural Network (PSOWNN)	ROC Curve = 0.96853 Sensitivity =94.167 % Specificity = 92.105 %
Al-Faris et al., 2014b	Modified automatic seeded region growing algorithm with a variation of the automated initial seed and threshold selection methodologies	Relative overlap (mean) = 0.75 True negative fraction (mean) = 0.9 True positive fraction (mean) = 0.82 Misclassification Rate (mean) = 0.18 ROC Curve = 0.97
Hassanien et al., 2014	Ant-based clustering and multilayer perceptron neural networks (MLPNN)	Mean absolute error (MAE) = 0.0339 Root mean squared error (RMSE)= error 0.1433 Relative absolute error (Tiedeu et al., 2012) = 7.535 %
Kannan et al., 2011	Kernel FCM in segmentation	Silhouette width (proposed method) = 0.78 Silhouette width (standard fuzzy c-means) = 0.52



**Figure 3:** Taxonomy for feature descriptor dimensions (Krig, 2014)



**Figure 4:** Overview of image descriptors

Texture features are the most common features that are utilised to analyse and interpret images by considering the variation of intensity and quantifying different properties such as smoothness, coarseness, and regularity (Kurani et al., 2004). A brief survey of extant techniques on textured feature extraction is as follows: grey level co-occurrence matrix (Haralick et al., 1973), grey level run length method (Chu et al., 1990), texture based on the fractal dimension (Chaudhuri and Sarkar, 1995) and texture features based on windowed Fourier filters (Azencott et al., 1997). Texture based features are extensively used in variety of applications, particularly in the medical image analysis (Huang et al., 2013; Liu, 2013; Moon et al., 2011; Sundararaj and Balamurugan, 2014).

Colour-based descriptors are the significant visual cue for image retrieval and object recognition (Liu and Yang, 2013). The colour descriptors in the current version of MPEG-7 (Martinez, 2004) are grouped in a number of histogram based descriptor including (1) dominant colour, (2) scalable colour, (3) colour structure, and (4) colour layout descriptors. With the release of various medical imaging modalities that involve colour information such as, Cervicography, Dermoscopy, fundus photography, and gastrointestinal endoscopy, colour descriptors are important in medical image analysis applications (Celebi and Schaefer, 2012). Colour-based descriptors are rarely used in the work done in the field of breast cancer detection.

### *Shape-based descriptors*

Shape feature extraction plays a significant role in various application such as shape retrieval, shape recognition, and classification, and shape alignment and registration (Yang et al., 2008). A hierarchical view of different shape description approaches collected is shown in Figure 5.

The shape is one of the main visual cues in medical image processing, thus shape descriptors are widely used to design the feature extractors in CAD systems. In recent years, shape feature extraction has been receiving more attention in the case of breast cancer detection. In order to classify malignant or benign calcifications in mammograms, Shen et al. (1994) have proposed a set of shape factors to measure the roughness of contours. Compactness, moments, and Fourier descriptor are extracted from the region of interests and the results show that higher accuracy is achieved by using a composition of the three shape factors.

Zhang et al. (2012), have developed a classifier to diagnose mass in mammograms. The mass shape features extracted from each contour contain area, convex, perimeter, circularity, compactness, solidity, convex, roughness, equivalent diameter, elongation, major axis length, minor axis length, eccentricity, and extent. The overall accuracy achieved in this study was 72 %.

To distinguish the exceptions in the shape of a lump in malignant and benign masses is a challenging task for physicians. A shape analysis method is presented by Rangayyan et al. (2000) for the classification of masses in mammographic images. The extracted shape features in this study include concavity, convexity, speculation index and compactness.

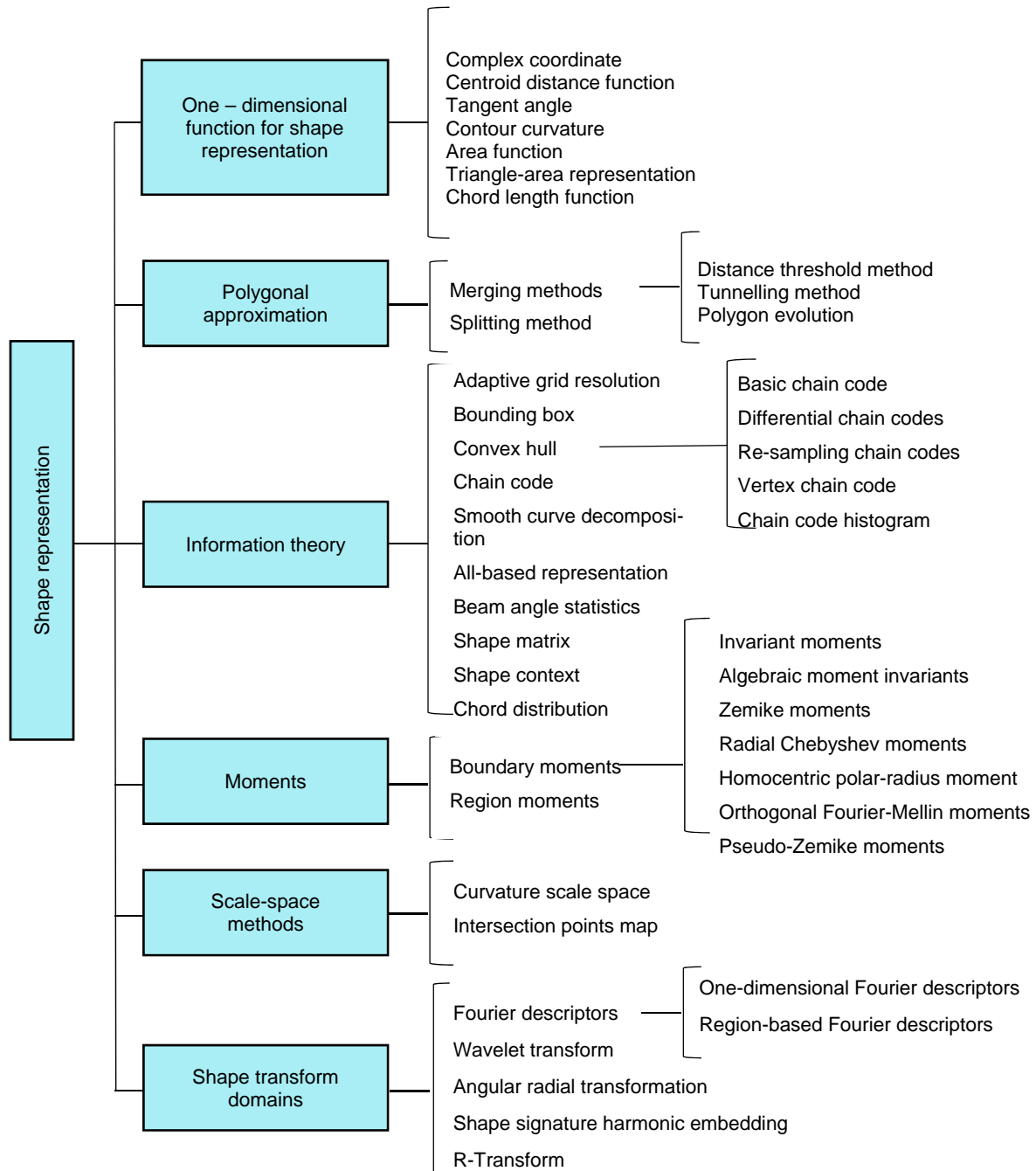
The obtained results in this work include the accuracy of 82 % and area ( $A_z$ ) of 0.79 under the receiver operating characteristics (James et al., 2001) curve.

In Gc et al. (2015), three new shape features, namely convexity index, circularity range ratio, and irregularity ratio are proposed to classify mammograms. The obtained accuracies in this work were 88 %, 87.5 %, and 94.5 % for convexity index, circularity range ratio and irregularity ratio, respectively. Radial distance measure (RDM), convexity and index angle are exploited from mass contour to feed into multilayer perceptron (MLP) and k-nearest neighbours (KNN) classifier (Boujelben et al., 2009). The sensitivity obtained with MLP classifiers and KNN are 94.2 % and 93.7, respectively.

### *Textural descriptors*

Texture features also are another expression of visual characteristics that is convenient for various domain of computer vision and pattern recognition. A hierarchical view of different texture description approaches is collected in Figure 6.

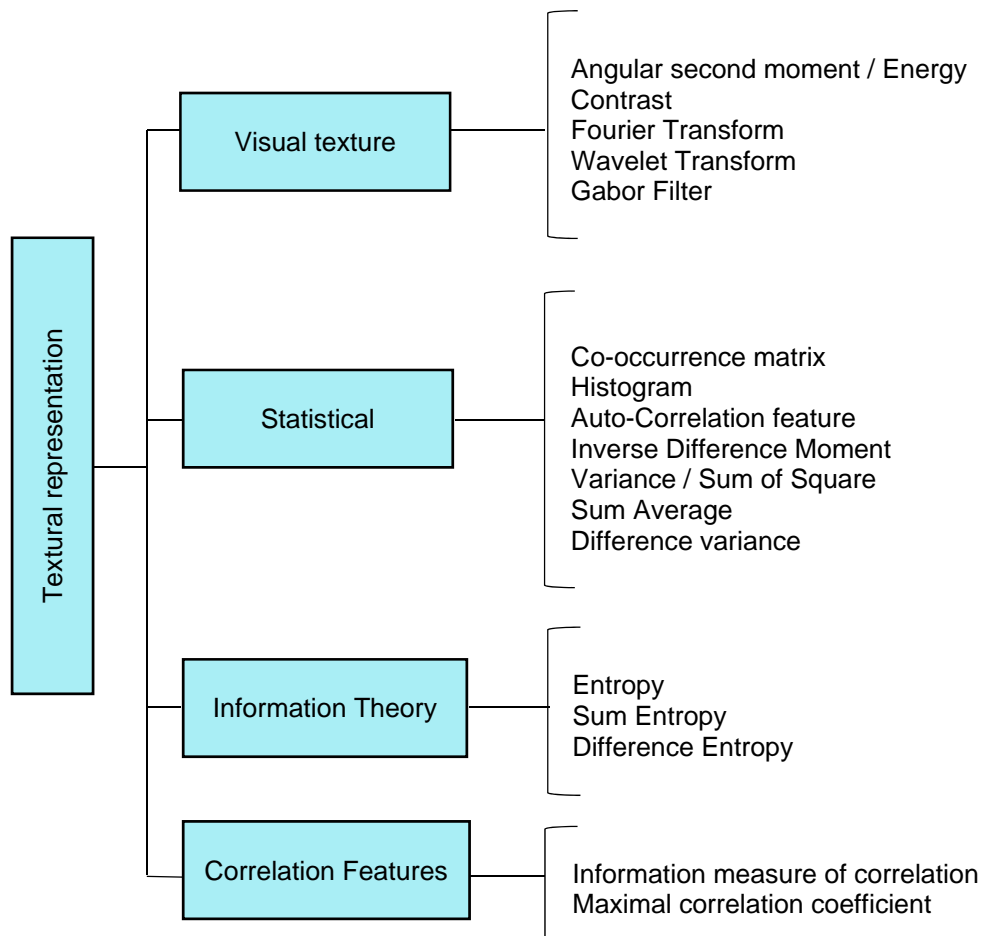
Texture or pattern is another visual clue in medical image processing, which are widely applied to design the feature extractors in CAD systems. Recently, several researchers have used textural features for the development of breast CAD system. The co-occurrence texture feature is one of the significant features that are widely used in the design of CAD system. A fuzzy support vector machine is presented to classify mass using ultrasound images (Shi et al, 2010).



**Figure 5:** Overview of shape descriptor techniques (Yang et al., 2008)

Textural features consist of co-occurrence matrix based on spatial grey level dependence (SGLD), fractal features, and histogram-based features extracted and transferred into fuzzy support vector machine classifier (FSVM). The obtained accuracy, sensitivity and area ( $A_z$ ) in this work were 94.25 %, 91.67 % and 0.964, respectively.

Filipczuk et al. (2012) have employed the grey level co-occurrence matrix (GLCM) and grey level Run-length matrix (GLRLM) to develop an automatic breast cancer diagnosis system on cytological images of fine needle biopsy material. The results of classification show 90 % efficiency to detect malignancy in FNB breast image.



**Figure 6:** Overview of texture descriptor techniques

To conduct an analysis of the 3D morphology between benign and malignant tumours in breast MRI images, a set of texture features are used: GLCM features, Energy, Entropy, Correlation, Difference Moment, Inertia, Cluster Shade, Cluster Prominence, Horlick's Correlation (Huang et al., 2013). The result shows the accuracy of 88.42 %, the sensitivity of 88.24 %, and specificity of 88.64 %. In another study, GLCM features are used to classify breast lesions on ultrasound (BUS) images (Gómez et al., 2012) .

A particle swarm that optimised wavelet neural network (PSOWNN) is presented based on texture features for breast cancer detection in mammogram images (Dheeba et al., 2014). Laws texture energy measures is employed to classify mass and calcification in digital mammograms. The achieved results

show that the area under the ROC curve is 0.968 with a sensitivity of 94.1 % and specificity of 92.1 %. Dheeba and Singh (2015) have developed a computer-aided diagnosis system known as Differential Evolution Optimized Wavelet Neural Network (DEOWNN) for automated breast cancer detection in mammography. The proposed system has used a series of texture features including GLCM feature, laws texture energy measures (LTEM) and Gabor features (GABOR). The obtained results show that the area under the ROC curve is 0.957 with the sensitivity of 93.3 %, specificity of 89.47 %, and accuracy 92.4 %.

### Classification

Classification is the last stage in CAD systems that differentiates and labels of the abnormality. Classification methods play an important role in the diagnosis and educational purposes in medicine. Classification approaches are categorised into two groups as shown in Figure 7. Generally, in the implementation of classifier in clinical image processing, supervised classification techniques are used.

Supervised classification examines a large number of unknown data and assigns them into related classes based on their characteristics. The main difference between unsupervised and supervised methods is that the unsupervised do not require pre-determined class. In a successfully supervised classification, all classes should be defined and the spectral properties of these classes have to be extracted during the training phase. However, in unsupervised classification, classes may be discovered but not known in advance. A brief description of the most popular supervised classification techniques along with their advantages and disadvantages are proposed in Table 3.

### Impact of imbalanced data set in classification

The imbalance dataset is a crucial issue in various pattern recognition applications. In binary classification, this problem occurs when the number of instances from one class is significantly less than the other class. In this situation, the overall predictive accuracy is achieved by the majority class while the minority class has a greater impact on the classifier performance. The impact of the imbalanced data in the real-world applications is the irreversible effect on classification performance, specifically in medical diagnosis. Due to delays in diagnosis and treatment, the patient may lose their lives.

To deal with the imbalanced dataset, several approaches have been presented in functional level and data level (Chawla et al., 2004; Ganganwar, 2012). Kernel transformation techniques and biased penalties approaches are recommended schemes for boosting support vector machines in functional level (Wang and Japkowicz, 2010).

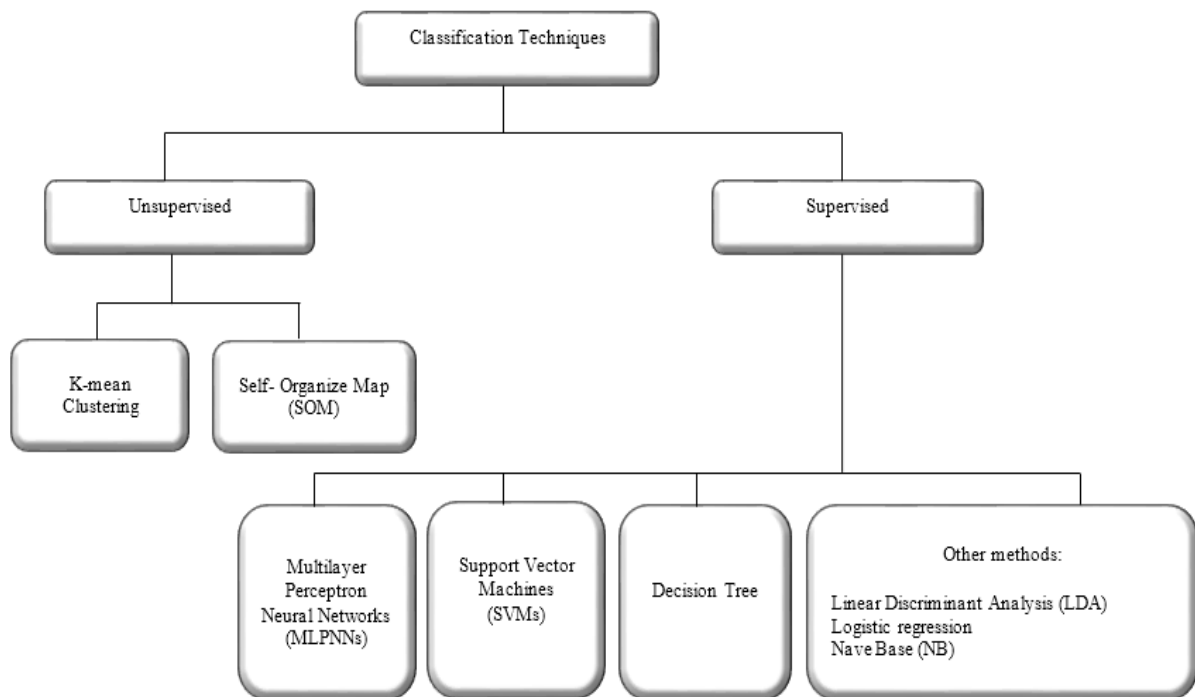


Figure 7: Overview of classification techniques

**Table 3:** Description of supervised classification techniques

Method	Description	Advantages	Disadvantages
Multilayer Perceptron Neural Networks (MLPNNs)	MLP is a feedforward artificial neural network model that is used to design recognition systems in order to distinguish specific patterns. An ANN is a sequence of several layers, each layer is composed of a set of neurons. All neurons in a layer are connected by certain weights the previous layer and the next layer neurons. Effectiveness and precision depend upon the number of inputs and number of layers	It is non-parametric learning and enforceable on noisy input. Able to modelling complex nonlinear and high dimensional problems. Different kernel function can be selected.	Dependence on the number of hidden layer and number of neurons in each layer. Select the type of network is very effective on classification result.
Support Vector Machines (SVMs)	A discriminative classifier to identify hyperplanes for binary classes or higher dimensions. Optimal results achieve by finding the maximum distance to the nearest data point of the every class. Lower generalization error of classification can be obtained by a larger margin.	It is a non-parametric learning technique. Effective in the high dimensional classifier. Different kernel function can be specified.	Performance and accuracy highly depend on the selection of kernel parameter. Poor performances with a greater number of features are much rather than the number of samples.
Decision Tree (DT)	DT is a hierarchical decision support tools to partitioning a data set to uniform subsets. It is a recursive function run to select the best attribute to split the data and expand to the leaf nodes.	It is a non-parametric learning method used for classification and regression. Simple to understand and to interpret. Able to handle multi-output problems.	Extremely unstable and dependent the data. Small change in data leads to generate the completely different tree.
Linear Discriminant Analysis (LDA)	LDA is a dimensionality reduction algorithm for classification.	It can deal with the nonlinearity of the distribution of samples. Learns low dimensional representations for classification properly	Unable to find non-linear structure hidden in the high dimensional data. Inherent matrix singularity problem

Kernel functions play a significant role in machine learning algorithms for effective linear or non-linear discrimination of high dimensional feature space. Available kernels for support vector machines include linear, polynomial, sigmoid and radial basis functions (Meyer, 2017). Some studies have acquired that radial basis function (RBF) provide higher accuracy to other kernel functions particularly in nonlinearly separable training data (Abdi et al., 2012; Anand et al., 2010).

The cost-sensitive learning offers another way to address the imbalanced dataset issue. In cost-sensitive classification approaches, the sensibility of a classifier for a specific class can be increased by assigning a higher cost of misclassification to this class (Japkowicz and Stephen, 2002). The misclassification cost can be manually offered by an expert or achieved by learning techniques (Sun et al., 2007, 2009). A few cost sensitive learning schemes such as adaptive boosting

cost sensitive, decision trees, and neural network cost sensitive have been introduced (He and Garcia, 2009). The soft margin SVM is a biased penalised technique that provides an efficient solution to classify non-separable or imbalanced data (Pant et al., 2011). Soft margin technique proposes a trade-off to minimise training error against margin boundary. In the case of non-separable data, soft margin classifier allows misclassifying some data points in the wrong side of the boundary.

At the data level, these solutions contain multitude variant forms of re-sampling such as random over-sampling, random under-sampling, directed over-sampling, directed under-sampling, and combinations of the above techniques. The rise of the likelihood for overfitting is the main drawback of random over-sampling techniques due to the replicating of minority instances (Almogahed and Kakadiaris, 2014). Chawla et al. (2002) proposed the Synthetic Minority Over-sampling Technique (SMOTE) which is done by creating synthetic examples rather than by over-sampling with replacement. The minority class is over-sampled by taking each minority class sample and introducing synthetic examples along the line segments joining any/all of the  $k$  minority class nearest neighbours. SMOTE is an effective oversampling technique which has some deficiency such as over-generation because the generation of synthetic samples increases the classes overlapping (Almogahed and Kakadiaris, 2014). Over-generation is problematic in the case of skewed class distribution with sparse minority class versus majority class (Maciejewski and Stefanowski, 2011).

He et al. (2008) present a novel adaptive synthetic (ADASYN) sampling approach for oversampling data to learn the imbalanced data sets. ADASYN is a weighted distribution method according to the level of difficulty in learning for different minority class samples. This sampling method measures the density distribution of minority instances to find a number of required samples to generate each minority instance. As a result, the ADASYN approach improves learning with respect to

reducing the bias introduced by the imbalanced data distribution as well as autonomously shift the classifier decision boundary to be more centralised in those samples that are difficult to learn (Choi, 2010; Haaland, 2013).

Random majority under-sampling is a common technique for under-sampling imbalance data (Seiffert et al., 2010). The main drawback of the random under-sampling is the potential samples that may have been overlooked. One-sided selection is the effective way to improve the performance of random under-sampling. Kubat and Matwin (1997) proposed a one-sided selection (OSS) in the attempts to intelligently under-sample the majority class by removing majority class examples that are considered either redundant or noisy.

#### *Classification methods in breast CAD systems*

The selection of a reliable classifier is critical to succeed in distinguishing benign breast tumours from malignant ones. Different classification approaches have been developed for breast cancer detection in different modalities. Artificial intelligent techniques and support vector machines have been widely investigated to develop classification frame work in the diagnosis of breast cancer in recent years. A comparison of SVM, K-means cluster, and neural network have been presented in Liu et al. (2003) to diagnose breast cancer. The outcomes indicate that the SVM exhibited a better whole performance. A computer-aided diagnosis system in ultrasound images has been developed in this study (Abdelwahed et al., 2015). In this research the classification rate of SVM, K-nearest neighbour (KNN), and classification & regression tree (CART) have been compared. The results indicate that SVM and CART obtained higher classification rate rather than KNN in differentiating between normal and abnormal lesions. A comparative table of classification results obtained by other studies for breast cancer detection is presented in Table 4. The performance of support vector machine



**Table 4:** Classification techniques on recent studies in computer-aided diagnosis for breast cancer

Reference	Method		Accuracy (%)	Sensitivity (%)	Specificity (%)	PPV (%)	NPV (%)	Area ( $A_z$ )
Chang et al., 2003	Compare the performance of SVM and Multilayer Propagation Neural Network (MLPNN) for diagnosis breast tumour on ultrasound images.	SVM	86	95	78	77	97	0.9396
		MLPNN	85	94	77	76	95	0.9395
Übeyli, 2007	Compare accuracies of different classifiers include multilayer perceptron neural network (MLPNN), combined neural network (CNN), probabilistic neural network (PNN), recurrent neural network (RNN) and support vector machine (SVM).	SVM	99	99	99.6	N/A	N/A	N/A
		RNN	99	98	99			
		PNN	98	97	99			
		CNN	97	97	98			
		MLPNN	91	91	92			
Bhardwaj and Tiwari, 2015	A Genetically Optimized Neural Network (GONN) algorithm proposed for classification breast cancer. The proposed GONN method compare with classical Back Propagation Neural Network (BPNN) and Koza's (Koza and Rice, 1991) model. The 10-fold cross-validation used to achieve classification accuracy.	BPNN	N/A	94	77	N/A	N/A	0.873
		Koza's Model		97	88			0.932
		GONN		99	100			1.0
Shi et al., 2010	A Fuzzy Support Vector Machin (FSVM) proposed to detection and classification mass in breast ultrasound. The achieved outcomes are compared with decision tree (Horsch et al., 2002) and LDA (Horsch et al., 2002; Lefebvre et al., 2000) methods.	FSVM	94	92	96	94	94	0.964
		Decision tree	84	95	79	79	95	N/A
		LDA	N/A	95	80	N/A	N/A	N/A
Dheeba et al., 2014	A Particle Swarm Optimized Wavelet Neural Network (PSOWNN) method propose to classification mass on mammogram images. The performance measures compare with Swarm Optimized Neural Network (SONN) (Dheeba & Selvi, 2012b) and Differential Evolution Optimized Wavelet Neural Network(DEOWNN) (Dheeba & Selvi, 2012a)	PSOWNN	94	94	92	N/A	N/A	0.9685
		SONN	90	91	86			0.9138
		DEOWNN	92	93	89			0.9535
Abdel-Zaher and Eldeib, 2016	A CAD system for breast cancer develops using deep belief network unsupervised path followed by back propagation supervised path		99	99	99	N/A	N/A	N/A

(SVM) and multilayer perceptron neural network (MLPNN) to diagnosis breast tumour on ultrasound images has been presented in Chang et al. (2003). The results show SVM provide higher accuracy, sensitivity and specificity in comparison to MLPNN in classification breast tumours. The breast cancer database from fine needle aspirates (FNA) from human breast tissue has been analysed in Bhardwaj and Tiwari (2015) and Übeyli (2007). The results illustrate that SVM present highest accuracy, sensitivity and specificity in comparison to combined neural network (CNN), probabilistic neural network (PNN) recurrent neural network (RNN) and MLPNN. The obtained results from Bhardwaj and Tiwari (2015) indicate that genetically optimized neural network (GONN) provide highest accuracy, sensitivity and specificity in comparison with back propagation neural network (BPNN) and Koza's model. A Fuzzy Support Vector Machine (FSVM) proposed in Shi et al. (2010) to detection and classification mass in breast ultrasound. The achieved outcomes are compared with decision tree (Horsch et al., 2002) and LDA (Horsch et al., 2002; Lefebvre et al., 2000) methods. The outcomes show FSVM provide higher accuracy and specificity in contrast with decision tree and LDA. A Particle Swarm Optimized Wavelet Neural Network (PSOWNN) method proposed in Dheeba et al. (2014) to classification mass on mammogram images. The performance measures compare with Swarm Optimized Neural Network (SONN) (Dheeba and Selvi, 2012b) and Differential Evolution Optimized Wavelet Neural Network (DEOWNN) (Dheeba and Selvi, 2012a) illustrated that enhanced accuracy, sensitivity and specificity has been achieved by PSOWNN method.

### **Performance evaluation**

Evaluating the true performance of the classifier is the last stage in CAD system. The outcome of binary classification (Normal/Abnormal) is presented in a 2×2 confusion matrix in Figure 8. True positive (Jinsamol et al.,

2015) value indicates the number of correctly predicted abnormality and true negative (TN) value shows the number of correctly predicted as a normal instance. The number of incorrect prediction of abnormality is shown by false negative (FN) and the number of incorrect prediction of normal objects is presented with false positive (FP) value. The performance of classifier has been generally measured by using various metrics (Fawcett, 2006) such as sensitivity, specificity, positive predictive value (PPV), negative predictive value (NPV), and accuracy, in which the calculation is shown in Figure 8. The main evaluation metrics that are used to assess performance of CAD systems include true positive fraction, false positive fraction, sensitivity, specificity, accuracy, receiver operating characteristics (Doi, 2014; James et al., 2001), and area under receiver operating characteristics (AUROC) (Gonçalves et al., 2014).

Receiver operative characteristics (James et al., 2001) is a two-dimensional graph for visualisation, organisation, and selection of the classifier based on their performance (Fawcett, 2006; Sonogo et al., 2008). The axes represent relative trade-offs between benefits (true positives) which are plotted on the Y and costs (false positives) which are plotted on the X (Fawcett, 2004). Probabilistic classifier such as SVM and neural network return a score to depict the degree of belonging of an object to the specific class rather than other. These scores can be used to rank the test data and classifier to achieve the best performance if the positive samples are on the top of the list (Sonogo et al., 2008). The most advantageous ROC curve is compared to other metrics to assess the performance of a classifier is for the visualisation of classifier performance in all possible threshold. An ROC curve can be interpreted in two ways, graphically or numerically. A popular method to map an ROC curve to a single scalar value is the area under ROC curve (AUROC) (Bradley, 1997; Hanley and McNeil, 1982).

		Actual Classes		Evaluation Metrics
		Positive	Negative	
Classifier outputs	Positive	True Positive	False Positive	Positive Predictive Value (PPV) / (Precision) $\frac{TP}{TP + FP}$
	Negative	False Negative	True Negative	Negative Predictive Value (NPV) $\frac{TN}{FN + TN}$
		P = TP + FN	N = FP + TN	Accuracy $\frac{TP + TN}{P + N}$
Evaluation Metrics		Sensitivity (Recall) $\frac{TP}{P}$	Specificity $\frac{TN}{N} = 1 - FPR$	

**Figure 8:** Confusion matrix and evaluation metrics

## CONCLUSION

In recent years, CAD systems are developed to automate breast cancer detections and classification of benign and malignant lesions in different modalities such as ultrasound, mammography, and MRI. The CAD systems improve radiologists' performance in finding and discriminating between normal and abnormal tissues.

The main stages of implementation of CAD system and different techniques for each specific step were categorised and presented in this chapter. The region-based segmentation and clustering-based algorithms are widely used to develop CAD systems for breast cancer detection. Extract suitable features for the detection of normal and abnormal lesions in breast depends on the nature of mass and imaging modalities, in which various features were introduced in this chapter. Artificial intelligent techniques and support vector machines have been widely investigated to develop classification framework in the diagnosis of breast cancer in recent years.

The imbalance dataset is a crucial issue in various pattern recognition applications. To deal with the imbalanced dataset several approaches have been presented in functional level and data level (Ganganwar, 2012). Kernel transformation techniques and biased penalties approaches are recommended schemes for boosting support vector machines in functional level. At the data level, over-sampling and under-sampling techniques are widely used to overcome imbalanced dataset issues. Synthetic Minority Oversampling Technique (SMOTE) and Adaptive Synthetic Sampling Approach (ADASYN) are effective over-sampling techniques which have some deficiency such as over-generation because the generation of synthetic samples increases the classes overlapping.

---

## REFERENCES

- Abdel-Zaher AM, Eldeib AM. Breast cancer classification using deep belief networks. *Exp Syst Applicat*. 2016;46:139-44.
- Abdelwahed NM, Eltoukhy MM, Wahed M. Computer aided system for breast cancer diagnosis in ultrasound images. *J Ecol Health Environ*. 2015;3:71-6.
- Abdi MJ, Hosseini SM, Rezghi M. A novel weighted support vector machine based on particle swarm optimization for gene selection and tumor classification. *Comput Math Meth Med*. 2012;2012:1-7.
- Al-Amri SS, Kalyankar NV. Image segmentation by using threshold techniques. *J Comp*. 2010;2(5):83-6.
- Al-Bayati M, El-Zaart A. Mammogram images thresholding for breast cancer detection using different thresholding methods. *Adv Breast Cancer Res*. 2013;2(3):72-7.
- Al-Faris AQ, Ngah UK, Isa NAM, Shuaib IL. Breast MRI tumour segmentation using modified automatic seeded region growing based on particle swarm optimization image clustering. *Soft Comput Industr Applic*. 2014a;49-60.
- Al-Faris AQ, Ngah UK, Isa NAM, Shuaib IL. Computer-aided segmentation system for breast mri tumour using modified automatic seeded region growing (BMRI-MASRG). *J Digital Imag*. 2014b;27:133-44.
- Almogahed BA, Kakadiaris IA. Empowering imbalanced data in supervised learning: a semi-supervised learning approach. *Artif Neural Netw Machine Learn*. CANN. 2014;523-530: Springer.
- Anand A, Pugalenth G, Fogel GB, Suganthan P. An approach for classification of highly imbalanced data using weighting and undersampling. *Amino Acids* 2010;39:1385-91.
- Azencott R, Wang JP, Younes L. Texture classification using windowed Fourier filters. *IEEE Trans Patt Anal Machine Intell*. 1997;19:148-53.
- Balleyguier C, Kinkel K, Fermanian J, Malan S, Djen G, Taourel P, et al. Computer-aided detection (CAD) in mammography: does it help the junior or the senior radiologist? *Eur J Radiol*. 2005;54:90-6.
- Berg WA, Blume JD, Cormack JB, Mendelson EB, Lehrer D, Böhm-Vélez M, et al. Combined screening with ultrasound and mammography vs mammography alone in women at elevated risk of breast cancer. *JAMA*. 2008;299:2151-63.
- Bhardwaj A, Tiwari A. Breast cancer diagnosis using genetically optimized neural network model. *Exp Syst Appl*. 2015;42:4611-20.
- Bird RE, Wallace T W, Yankaskas BC. Analysis of cancers missed at screening mammography. *Radiology*. 1992;184:613-7.
- Boujelben A, Chaabani AC, Tmar H, Abid M. Feature extraction from contours shape for tumor analyzing in mammographic images. Paper presented at the Digital Image Computing: Techniques and Applications. 2009; DICTA'09.
- Boyd NF, Guo H, Martin LJ, Sun L, Stone J, Fishell E, et al. Mammographic density and the risk and detection of breast cancer. *N Engl J Med*. 2007;356:227-36.
- Bradley AP. The use of the area under the ROC curve in the evaluation of machine learning algorithms. *Pattern Recogn*. 1997;30:1145-59.
- Cao Y, Hao X, Zhu X, Xia S. An adaptive region growing algorithm for breast masses in mammograms. *Front Electr Electronic Eng China*. 2010;5:128-36.
- Celebi ME, Schaefer G (eds). Color medical image analysis. Amsterdam: Springer Science & Business Media, 2012. (Lecture Notes in Computational Vision and Biomechanics, Vol. 6).
- Chabi ML, Borget I, Ardiles R, Aboud G, Boussouar S, Vilar V, et al. Evaluation of the accuracy of a computer-aided diagnosis (CAD) system in breast ultrasound according to the radiologist's experience. *Acad Radiol*. 2012;19:311-9.
- Chang RF, Wu WJ, Moon WK, Chou YH, Chen DR. Support vector machines for diagnosis of breast tumors on US images. *Acad Radiol*. 2003;10:189-97.
- Chaudhuri BB, Sarkar N. Texture segmentation using fractal dimension. *IEEE Trans Pattern Anal Machine Intell*. 1995;17(1):72-7.
- Chawla NV, Bowyer KW, Hall LO, Kegel Meyer WP. SMOTE: synthetic minority over-sampling technique. *J Artif Intell Res*. 2002;321-57.
- Chawla NV, Japkowicz N, Kotcz A. Special issue on learning from imbalanced data se (Editorial). *ACM Sigkdd Explor Newslett*. 2004;6(1):1-6.
- Chen CM, Chou YH, Han KC, Hung GS, Tiu CM, Chiou HJ, et al. Breast lesions on sonograms: computer-aided diagnosis with nearly setting-independent features and artificial neural networks. *Radiology*. 2003;226:504-14.
-

- Choi JM. A selective sampling method for imbalanced data learning on support vector machines. Graduate Theses and Dissertations, Paper 11529. Ames, IA: Iowa State Univ., 2010.
- Chu A, Sehgal CM, Greenleaf JF. Use of gray value distribution of run lengths for texture analysis. *Pattern Recogn Lett.* 1990;11:415-9.
- Corsetti V, Houssami N, Ghirardi M, Ciatto S. Evidence of the effect of adjunct ultrasound screening in women with mammography-negative dense breasts: Interval breast cancers at 1 year follow-up. *Eur J Cancer.* 2011;47:1021-6.
- Costantini M, Belli P, Lombardi R, Franceschini G, Mulè A, Bonomo L. Characterization of solid breast masses use of the sonographic breast imaging reporting and data system lexicon. *J Ultrasound Med.* 2006;25:649-59.
- De Carvalho FDA, Lechevallier Y, De Melo FM. Partitioning hard clustering algorithms based on multiple dissimilarity matrices. *Pattern Recogn.* 2012;45:447-64.
- Dheeba J, Selvi ST. An improved decision support system for detection of lesions in mammograms using differential evolution optimized wavelet neural network. *J Med Syst.* 2012a;36:3223-32.
- Dheeba J, Selvi ST. A swarm optimized neural network system for classification of microcalcification in mammograms. *J Med Syst.* 2012b;36:3051-61.
- Dheeba J, Singh NA. Computer aided intelligent breast cancer detection: second opinion for radiologists - a prospective study. *Comput Intell Applicat Model Cont.* 2015;397-430: Springer.
- Dheeba J, Singh NA, Selvi ST. Computer-aided detection of breast cancer on mammograms: A swarm intelligence optimized wavelet neural network approach. *J Biomed Inform.* 2014;49:45-52.
- Dinnes J, Moss S, Melia J, Blanks R, Song F, Kleijnen J. Effectiveness and cost-effectiveness of double reading of mammograms in breast cancer screening: findings of a systematic review. *Breast.* 2001;10:455-63.
- Doi K. Computer-aided diagnosis in medical imaging: achievements and challenges. Paper presented at the World Congress on Medical Physics and Biomedical Engineering, Munich, Germany, 2009.
- Doi K. Current status and future potential of computer-aided diagnosis in medical imaging. *Brit J Radiol.* 2014;78:S3-S19.
- Dromain C, Boyer B, Ferré R, Canale S, Delalogue S, Balleyguier C. Computer-aided diagnosis (CAD) in the detection of breast cancer. *Eur J Radiol.* 2013;82:417-23.
- Drukker K, Giger M, Horsch K, Kupinski MA, Vybomy CJ, Mendelson EB. Computerized lesion detection on breast ultrasound. *Med Phys.* 2002;29:1438-46.
- Drukker K, Horsch KJ, Pesce LL, Giger ML. Interreader scoring variability in an observer study using dual-modality imaging for breast cancer detection in women with dense breasts. *Acad Radiol.* 2013;20: 847-53.
- El Atlas N, El Aroussi M, Wahbi M. Computer-aided breast cancer detection using mammograms: A review. Paper presented at the Second World Conference on Complex Systems (WCCS), 2014.
- Ertosun MG, Rubin DL. Probabilistic visual search for masses within mammography images using deep learning. Paper presented at the IEEE International Conference on Bioinformatics and Biomedicine (BIBM), 2015.
- Fawcett T. ROC graphs: Notes and practical considerations for researchers. *Pattern Recogn Lett.* 2004; 31(8):1-38.
- Fawcett T. An introduction to ROC analysis. *Pattern Recogn Lett.* 2006;27:861-74.
- Filipczyk P, Fevens T, Krzyżak A, Obuchowicz A. GLCM and GLRLM based texture features for computer-aided breast cancer diagnosis. *J Med Inform Technol.* 2012;19:109-15.
- Freer TW, Ullissey MJ. Screening mammography with computer-aided detection: Prospective study of 12,860 patients in a community breast center. *Radiology.* 2001;220:781-6.
- Ganganwar V. An overview of classification algorithms for imbalanced datasets. *Int J Emerg Technol Adv Eng.* 2012;2(4):42-7.
- Gc S, Pack C, Shin S, Choi HD. Breast cancer classification of mammographic masses using improved shape features. Paper presented at the Proceedings of the 2015 Conference on research in adaptive and convergent systems. 2015.
- Gilbert FJ, Astley SM, Gillan MG, Agbaje OF, Wallis MG, James J, et al. Single reading with computer-aided detection for screening mammography. *N Engl J Med.* 2008;359:1675-84.

- Gnonnou C, Smaoui N. Segmentation and 3D reconstruction of MRI images for breast cancer detection. Paper presented at the Image Processing, Applications and Systems Conference (IPAS), 2014.
- Gómez W, Pereira W, Infantsi AFC. Analysis of co-occurrence texture statistics as a function of gray-level quantization for classifying breast ultrasound. *IEEE Transactions on Medical Imaging*. 2012;31:1889-99.
- Gonçalves VM, Delamaro ME, Nuns FLS. A systematic review on the evaluation and characteristics of computer-aided diagnosis systems. *Rev Brasil Engenharia Bioméd*. 2014;30:355-83.
- Haaland F. Making sense of the human genome using machine learning. Master thesis. Oslo: Univ. of Oslo, Dept. of Informatics, 2013.
- Hanley JA, McNeil BJ. The meaning and use of the area under a receiver operating characteristic (ROC) curve. *Radiology*. 1982;143:29-36.
- Haralick RM, Shanmugam K, Dinstein IH. Textural features for image classification. *IEEE Transactions on Systems, Man and Cybernetics*. 1973;6:610-21.
- Haris K, Efstratiadis SN, Maglaveras N, Katsaggelos AK. Hybrid image segmentation using watersheds and fast region merging. *IEEE Transactions on Image Processing*. 1998;7(12):1684-99.
- Hassanien AE, Mofteh HM, Azar AT, Shoman M. MRI breast cancer diagnosis hybrid approach using adaptive ant-based segmentation and multilayer perceptron neural networks classifier. *Appl Soft Comput*. 2014;14:62-71.
- He H, Garcia E. Learning from imbalanced data. *IEEE Transactions on Knowledge and Data Engineering*. 2009;21(9):1263-84.
- He H, Bai Y, Garcia E, Li S. ADASYN: Adaptive synthetic sampling approach for imbalanced learning. Paper presented at the IEEE World Congress on Computational Intelligence. *IJCNN* 2008.
- Heywang SH, Wolf A, Pruss E, Hilbertz T, Eiermann W, Permanetter W. MR imaging of the breast with Gd-DTPA: use and limitations. *Radiology*. 1989;171:95-103.
- Horsch K, Giger ML, Venta LA, Vyborny CJ. Computerized diagnosis of breast lesions on ultrasound. *Med Phys*. 2002;29:157-64.
- Horsch K, Giger ML, Vyborny CJ, Venta LA. Performance of computer-aided diagnosis in the interpretation of lesions on breast sonography. *Acad Radiol*. 2004;11:272-80.
- Huang YH, Chang YC, Huang CS, Wu TJ, Chen JH, Chang RF. Computer-aided diagnosis of mass-like lesion in breast MRI: differential analysis of the 3-D morphology between benign and malignant tumors. *Comput Methods Programs Biomed* 2013;112:508-17.
- Huang YL, Chen DR, Liu YK. Breast cancer diagnosis using image retrieval for different ultrasonic systems. Paper presented at the Image Processing, *ICIP'04*. 2004.
- Huang YL, Lin SH, Chen DR. Computer-aided diagnosis applied to 3-D US of solid breast nodules by using principal component analysis and image retrieval. Paper presented at the 27th Annual International Conference of the Engineering in Medicine and Biology Society. *IEEE-EMBS*, 2005.
- Islam MJ, Ahmadi M, Sid-Ahmed MA. Computer-aided detection and classification of masses in digitized mammograms using artificial neural network. *Adv Swarm Intell*. 2010;2010:327-34.
- Issac Niwas S, Palanisamy P, Chibbar R, Zhang WJ. An expert support system for breast cancer diagnosis using color wavelet features. *J Med Syst*. 2012;36:3091-102.
- Jain AK. Data clustering: 50 years beyond K-means. *Pattern Recogn Lett*. 2010;31:651-66.
- James D, Clymer BD, Schmalbrock P. Texture detection of simulated microcalcification susceptibility effects in magnetic resonance imaging of breasts. *J Magn Resonance Imag*. 2001;13:876-81.
- Japkowicz N, Stephen S. The class imbalance problem: A systematic study. *Intelligent Data Anal*. 2002;6:429-49.
- Jesneck JL, Lo JY, Baker JA. Breast mass lesions: computer-aided diagnosis models with mammographic and sonographic descriptors. *Radiology*. 2007;244:390-8.
- Jinsamol K, Shiji T, Thomas V. CAD system for breast ultrasound images using multi-scale blob detection and active contour segmentation algorithm. In: *International Conference on Information Science (ICIS' 14)*. Kerala: Department of Computer Science & Engineering, College of Engineering Cherthala, Kerala, 2015.
- Kannan S, Ramathilagam S, Devi R, Sathya A. Robust kernel FCM in segmentation of breast medical images. *Exp Syst Applicat*. 2011;38:4382-9.
- Kerlikowske K, Carney PA, Geller B, Mandelson MT, Taplin SH, Malvin K, et al. Performance of screening mammography among women with and without a first-degree relative with breast cancer. *Ann Intern Med*. 2000;133:855-63.

- Kim JH, Cha JH, Kim N, Chang Y, Ko M-S, Choi Y-W, et al. Computer-aided detection system for masses in automated whole breast ultrasonography: development and evaluation of the effectiveness. *Ultrasonography*. 2014;33:105-15.
- Koza JR, Rice JP. Genetic generation of both the weights and architecture for a neural network. Paper presented at the IJCNN-91-Seattle International Joint Conference on Neural Networks. 1991.
- Kozegar E, Soryani M, Minaei B, Domingues I. Assessment of a novel mass detection algorithm in mammograms. *J Cancer Res Ther*. 2013;9(4):592-600.
- Krig S. *Computer vision metrics: survey, taxonomy, and analysis*: Oxford: Apress, 2014.
- Kubat M, Matwin S. Addressing the curse of imbalanced training sets: one-sided selection. Paper presented at the Proceedings of the Fourteenth International Conference on Machine Learning. 1997.
- Kuhl CK. Current status of breast MR imaging, Pt. 2: Clinical applications. *Radiology*. 2007;244:672-91.
- Kurani AS, Xu DH, Furst J, Raicu DS. Co-occurrence matrices for volumetric data. Paper presented at the 7th IASTED International Conference on Computer Graphics and Imaging, Kauai, USA. 2004.
- Kyaw MM. Pre-segmentation for the computer aided diagnosis system. *Int J Computer Sci Inf Technol*. 2013;5(1):79.
- Lee LK, Liew SC, Thong WJ. A review of image segmentation methodologies in medical image. *Adv Comp Commun Eng Technol*. 2015;1069-80.
- Lefebvre F, Meunier M, Thibault F, Laugier P, Berger G. Computerized ultrasound B-scan characterization of breast nodules. *Ultrasound Med Biol*. 2000;26:1421-8.
- Li Y, Shin J, Choi Y, Kim J. Three-dimensional volume reconstruction from slice data using phase-field models. *Computer Vision Image Understand*. 2015.
- Liu GH, Yang JY. Content-based image retrieval using color difference histogram. *Pattern Recogn*. 2013;46:188-98.
- Liu H. Texture feature analysis of breast lesions in automated 3D breast ultrasound. Thesis. Uppsala: Uppsala Univ., 2013.
- Liu H, Zhang RS, Luan F, Yao XJ, Liu MC, Hu ZD, et al. Diagnosing breast cancer based on support vector machines. *J Chem Inf Comput Sci*. 2003;43:900-7.
- Longo R, Tonutti M, Rigon L, Arfelli F, Dreossi D, Quai E, et al. Clinical study in phase-contrast mammography: image-quality analysis. *Philos Trans Royal Soc London A*. 2014;372:20130025.
- Maciejewski T, Stefanowski J. Local neighbourhood extension of SMOTE for mining imbalanced data. Paper presented at the IEEE Symposium on Computational Intelligence and Data Mining (CIDM), 2011.
- Malich A, Azhari T, Böhm T, Fleck M, Kaiser W. Reproducibility - an important factor determining the quality of computer aided detection (CAD) systems. *Eur J Radiol*. 2000;36:170-4.
- Martinez JM. MPEG-7 overview (version 10), ISO. Retrieved from (2004).
- Marx C, Malich A, Facius M, Grebenstein U, Sauner D, Pfleiderer SOR, et al. Are unnecessary follow-up procedures induced by computer-aided diagnosis (CAD) in mammography? Comparison of mammographic diagnosis with and without use of CAD. *Eur J Radiol*. 2004;51:66-72.
- Maskarinec G, Pagano I, Chen Z, Nagata C, Gram IT. Ethnic and geographic differences in mammographic density and their association with breast cancer incidence. *Breast Cancer Res Treat*. 2007;104:47-56.
- Meeuwis C, van de Ven SM, Stapper G, Fernandez Gallardo AM, van den Bosch MAAJ, Mali WPTM, et al. Computer-aided detection (CAD) for breast MRI: evaluation of efficacy at 3.0 T. *Eur Radiol*. 2010;20:522-8.
- Meyer D. Support vector machines. The interface to libsvm in package e1071. 2017. <ftp://cran.r-project.org/pub/R/web/packages/e1071/vignettes/svmdoc.pdf>.
- Moftah HM, Azar AT, Al-Shammari ET, Ghali NI, Hassanien AE, Shoman M. Adaptive k-means clustering algorithm for MR breast image segmentation. *Neural Comput Applicat*. 2014;24:1917-28.
- Moon WK, Shen YW, Huang CS, Chiang LR, Chang RF. Computer-aided diagnosis for the classification of breast masses in automated whole breast ultrasound images. *Ultrasound Med Biol*. 2011;37:539-48.
- Moon WK, Shen YW, Bae MS, Huang CS, Chen JH, Chang RF. Computer-aided tumor detection based on multi-scale blob detection algorithm in automated breast ultrasound images. *IEEE Trans Med Imaging*. 2013;32:1191-200.
- Mousa R, Munib Q, Moussa A. Breast cancer diagnosis system based on wavelet analysis and fuzzy-neural. *Exp Syst Applicat*. 2005;28:713-23.

- Narkhede H. Review of image segmentation techniques. *Int J Sci Mod Eng*. 2013;1(5461):28.
- Nelson HD, Tyne K, Naik A, Bougatsos C, Chan BK, Humphrey L, et al. Screening for breast cancer: an update for the US Preventive Services Task Force. *Ann Intern Med*. 2009;151:727-37;W237-42.
- Nie K. Development of breast MRI computer-aided diagnosis system. Thesis. Irvine, CA: University of California, 2009.
- Nothacker M, Duda V, Hahn M, Warm M, Degenhardt F, Madjar H, et al. Early detection of breast cancer: benefits and risks of supplemental breast ultrasound in asymptomatic women with mammographically dense breast tissue. A systematic review. *BMC Cancer*. 2009;9:335.
- Nunes FL, Schiabel H, Goes CE. Contrast enhancement in dense breast images to aid clustered microcalcifications detection. *J Digital Imaging*. 2007;20:53-66.
- Ohuchi N, Suzuki A, Sobue T, Kawai M, Yamamoto S, Zheng YF, et al. Sensitivity and specificity of mammography and adjunctive ultrasonography to screen for breast cancer in the Japan Strategic Anti-cancer Randomized Trial (J-START): a randomised controlled trial. *Lancet*. 2016;387(10016):341-348.
- Oliver A, Freixenet J, Martí J, Pérez E, Pont J, Dentonc ERE, et al. A review of automatic mass detection and segmentation in mammographic images. *Med Image Anal*. 2010;14:87-110.
- Pal NR, Pal SK. A review on image segmentation techniques. *Pattern Recogn*. 1993;26:1277-94.
- Pant R, Trafalis TB, Barker K. Support vector machine classification of uncertain and imbalanced data using robust optimization. Paper presented at the Proceedings of the 15th WSEAS international conference on computers. 2011.
- Rangayyan RM, Mudigonda NR, Desautels JL. Boundary modelling and shape analysis methods for classification of mammographic masses. *Med Biol Eng Comput*. 2000;38:487-96.
- Rastgarpour M, Shanbehzadeh J. Application of AI techniques in medical image segmentation and novel categorization of available methods. Paper presented at the Proceedings of the International MultiConference of Engineers and Computer Scientists 2011, Vol I, IMECS 2011, March 16-18, 2011, Hong Kong.
- Rizzi M, D'Aloia M, Castagnolo B. Health care CAD systems for breast microcalcification cluster detection. *J Med Biol Eng*. 2012;32:147-56.
- Rouhi R, Jafari M, Kasaei S, Keshavarzian P. Benign and malignant breast tumors classification based on region growing and CNN segmentation. *Exp Syst Applic*. 2015;42:990-1002.
- Rundo L, Militello C, Vitabile S, Casarino C, Russo G, Midiri M, et al. Combining split-and-merge and multi-seed region growing algorithms for uterine fibroid segmentation in MRgFUS treatments. *Med Biol Eng Comput*. 2016;54:1071-84.
- Saha M, Agarwal S, Arun I, Ahmed R, Chatterjee S, Mitra P, et al. Histogram based thresholding for automated nucleus segmentation using breast imprint cytology. *Advancements Med Electron*. 2015;49-57.
- Sahiner B, Chan HP, Roubidoux MA, Hadjiiski LM, Helvie MA, Paramagul C, et al. Malignant and benign breast masses on 3D US volumetric images: effect of computer-aided diagnosis on radiologist accuracy. *Radiology*. 2007;242:716-24.
- Sanchez Gómez S, Torres Tabanera M, Vega Bolivar A, Sainz Miranda M, Baroja Mazo A, Ruiz Diaz M, et al. Impact of a CAD system in a screen-film mammography screening program: A prospective study. *Eur J Radiol*. 2011;80:e317-21.
- Sathya A, Senthil S, Samuel A. Segmentation of breast MRI using effective Fuzzy C-Means method based on Support Vector Machine. Paper presented at the World Congress on Information and Communication Technologies (WICT), 2012.
- Scheel JR, Lee JM, Sprague BL, Lee CI, Lehman CD. Screening ultrasound as an adjunct to mammography in women with mammographically dense breasts. *Am J Obstetr Gynaecol*. 2015;212:9-17.
- Seiffert C, Khoshgoftaar TM, Van Hulse J, Napolitano, A. RUSBoost: A hybrid approach to alleviating class imbalance. *IEEE Transactions on Systems, Man and Cybernetics, Part A*. 2010;40(1):185-97.
- Shen L, Rangayyan RM, Desautels JL. Application of shape analysis to mammographic calcifications. *IEEE Transactions on Medical Imaging*. 1994;13(2):263-74.
- Shi X, Cheng H, Hu L, Ju W, Tian J. Detection and classification of masses in breast ultrasound images. *Digital Sign Proc*. 2010;20:824-36.
- Sonego P, Kocsor A, Pongor S. ROC analysis: applications to the classification of biological sequences and 3D structures. *Brief Bioinform*. 2008;9:198-209.
- Song SE, Seo BK, Cho KR, Woo OH, Son GS, Kim C, et al. Computer-aided detection (CAD) system for breast MRI in assessment of local tumor extent, nodal status, and multifocality of invasive breast cancers: preliminary study. *Cancer Imaging*. 2015;15(1):1.



- Sun Y, Kamel MS, Wong AK, Wang Y. Cost-sensitive boosting for classification of imbalanced data. *Pattern Recogn.* 2007;40:3358-78.
- Sun Y, Wong AK, Kamel, MS. Classification of imbalanced data: A review. *Int J Pattern Recogn Artif Intell.* 2009;23:687-719.
- Sundararaj GK, Balamurugan V. An expert system based on texture features and decision tree classifier for diagnosis of tumor in brain MR images. Paper presented at the Contemporary Computing and Informatics (IC3I), 2014.
- Svensson W. A review of the current status of breast ultrasound. *Eur J Ultrasound.* 1997;6:77-101.
- Tan T, Platel B, Mus RDM, Karssemeijer N. Computer-aided detection of cancer in automated 3-D breast ultrasound. *IEEE Transactions on Medical Imaging.* 2013;32:1698-706.
- Tan T, Mordang JJ, van Zelst J, Grivegnée A, Gubern-Mérida A, Melendez J, et al. Computer-aided detection of breast cancers using Haar-like features in automated 3D breast ultrasound. *Med Phys.* 2015;42:1498-504.
- Tiedeu A, Daul C, Kentsop A, Graebing P, Wolf D. Texture-based analysis of clustered microcalcifications detected on mammograms. *Digital Sign Proc.* 2012;22:124-32.
- Übeyli ED. Implementing automated diagnostic systems for breast cancer detection. *Exp Syst Applicat.* 2007;33:1054-62.
- Wang BX, Japkowicz N. Boosting support vector machines for imbalanced data sets. *Knowledge and Information Systems.* 2010;25(1):1-20.
- Wang LC, DeMartini WB, Partridge SC, Peacock S, Lehman CD. MRI-detected suspicious breast lesions: predictive values of kinetic features measured by computer-aided evaluation. *Am J Roentgenol.* 2009;193:826-31.
- Warren R, Duffy W. Comparison of single reading with double reading of mammograms, and change in effectiveness with experience. *Brit J Radiol.* 1995;68(813):958-62.
- Williams TC, DeMartini WB, Partridge SC, Peacock S, Lehman CD. Breast MR imaging: computer-aided evaluation program for discriminating benign from malignant lesions. *Radiology.* 2007;244:94-103.
- Yang M, Kpalma K, Ronsin J. A survey of shape feature extraction techniques. *Pattern Recogn.* 2008;43-90.
- Yong HW, Bade A, Muniandy RK. 3D reconstruction of breast cancer from mammograms using volume rendering techniques. *Jurnal Teknologi.* 2015;75(2).
- Yu-qian Z, Wei-hua G, Zhen-cheng C, Jing-tian T, Ling-yun L. Medical images edge detection based on mathematical morphology. Paper presented at the Engineering in Medicine and Biology Society. IEEE-EMBS, 2005.
- Zhang Y-J. An overview of image and video segmentation in the last 40 years. *Adv Image Video Segment.* 2006;1-15.
- Zhang Y, Tomuro N, Furst J, Raicu DS. Building an ensemble system for diagnosing masses in mammograms. *Int J Computer Assist Radiol Surg.* 2012;7:323-9.