

Supplementary material to:

**AUTOMATIC QUANTITATIVE ANALYSIS OF MORPHOLOGY OF
APOPTOTIC HL-60 CELLS**

Yahui Liu¹, Wang Lin¹, Xu Yang¹, Weizi Liang¹, Jun Zhang¹, Maobin Meng², John R. Rice³,
Yu Sa^{1*}, Yuanming Feng^{1,2,3*}

¹ Department of Biomedical Engineering, Tianjin University, Tianjin, China

² Department of Radiation Oncology, Tianjin Medical University Cancer Institute and Hospital, Tianjin China

³ Department of Radiation Oncology, East Carolina University, Greenville, NC/USA

* Corresponding authors: Yu Sa, sayu@tju.edu.cn; Yuanming Feng, fengyu@ecu.edu

Contents of supporting information

The following 10 supplementary figures show 10 pairs (a light channel image and a corresponding 3-channel fluorescent image) of images with 90 cells to illustrate the results of segmentation with the automatic methods described in the paper. 4 images of single cells are enlarged to show in detail. The close-up images show a normal cell in Figure 1, a late apoptotic cell in Figure 2, 2 early apoptotic cells in Figure 3 and 4, respectively.

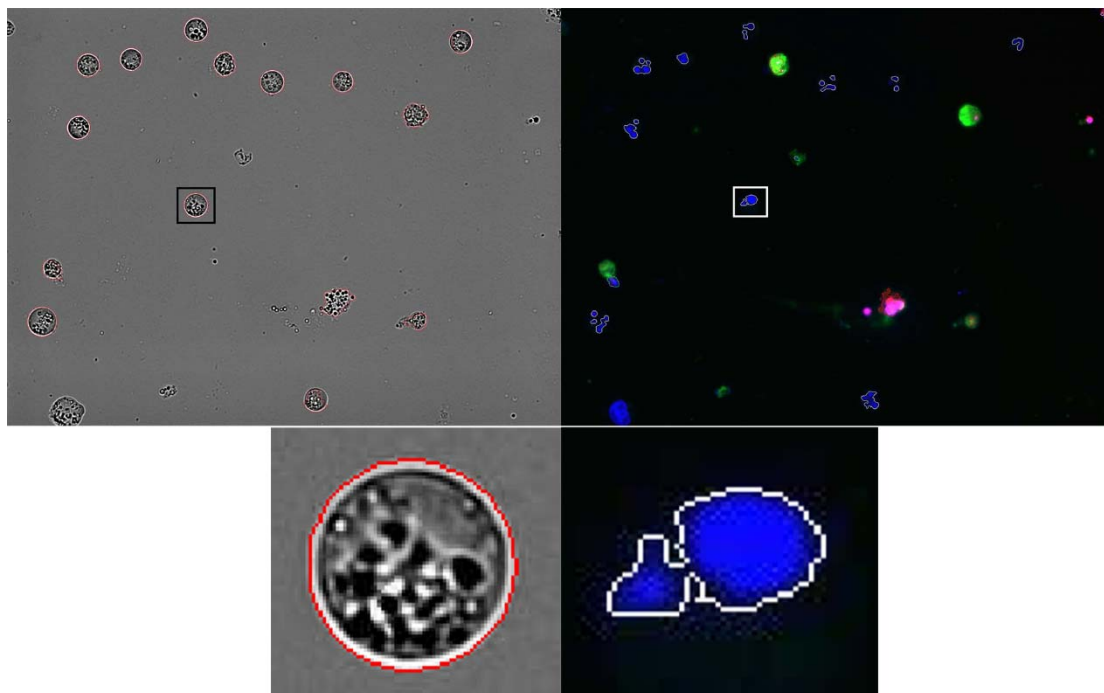


Figure 1: Segmentation of 15 cells in a light channel image and a corresponding fluorescent image, and a close-up image of a segmented normal cell

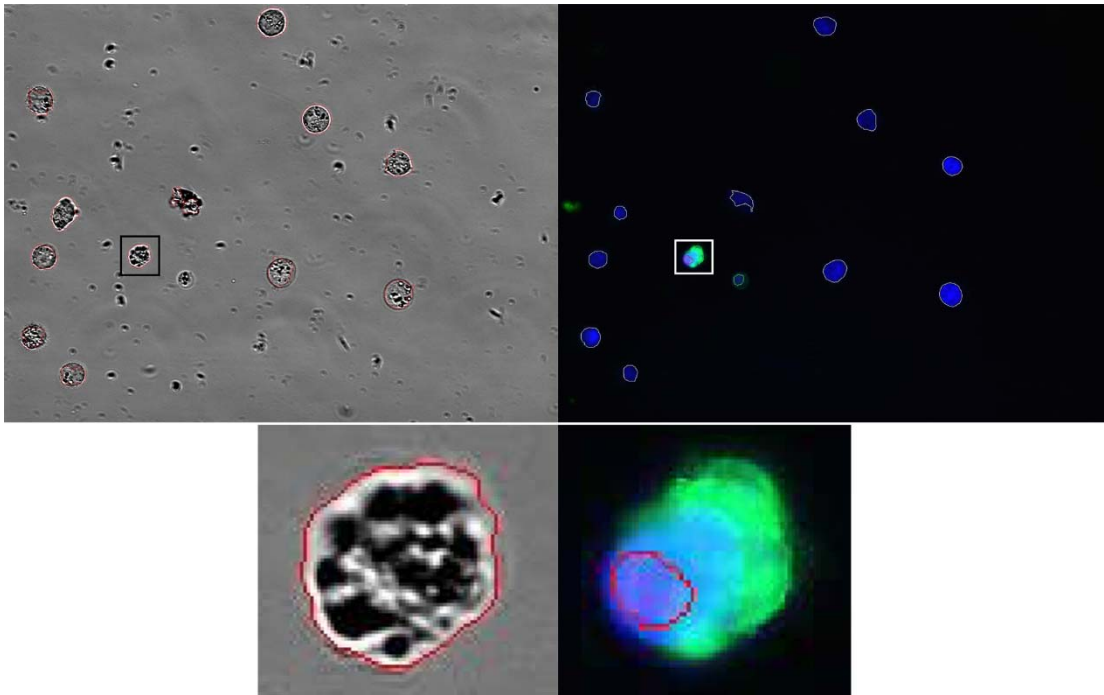


Figure 2: Segmentation of 12 cells in a light channel image and a corresponding fluorescent image, and a close-up image of a segmented late apoptotic cell

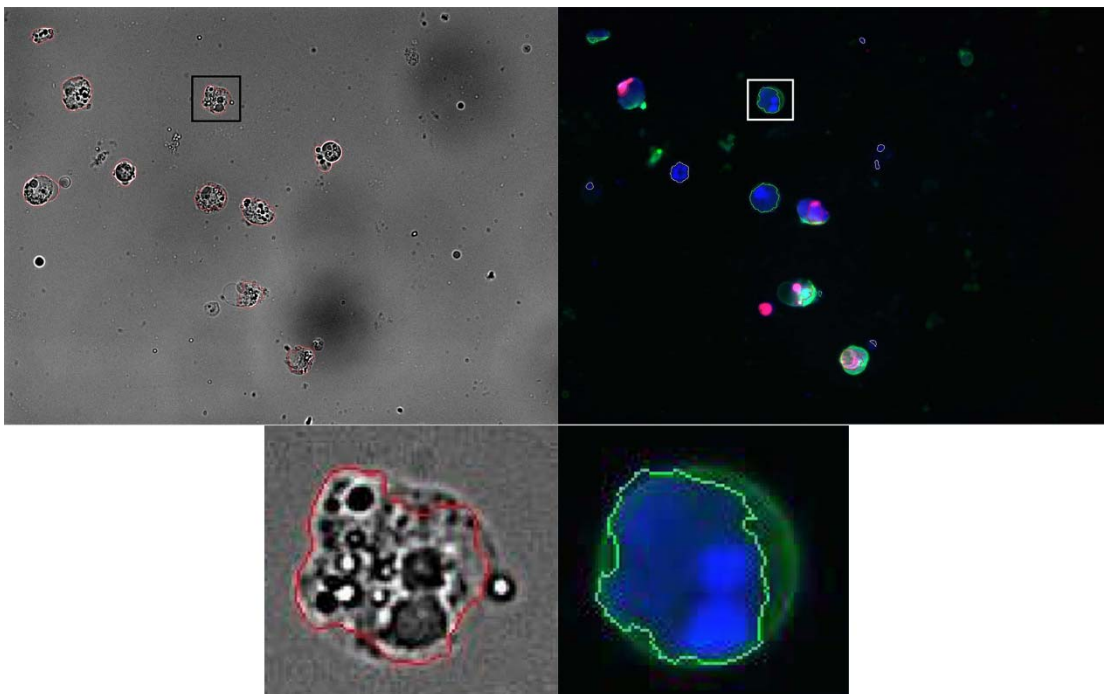


Figure 3: Segmentation of 10 cells in a light channel image and a corresponding fluorescent image, and a close-up image of a segmented early apoptotic cell

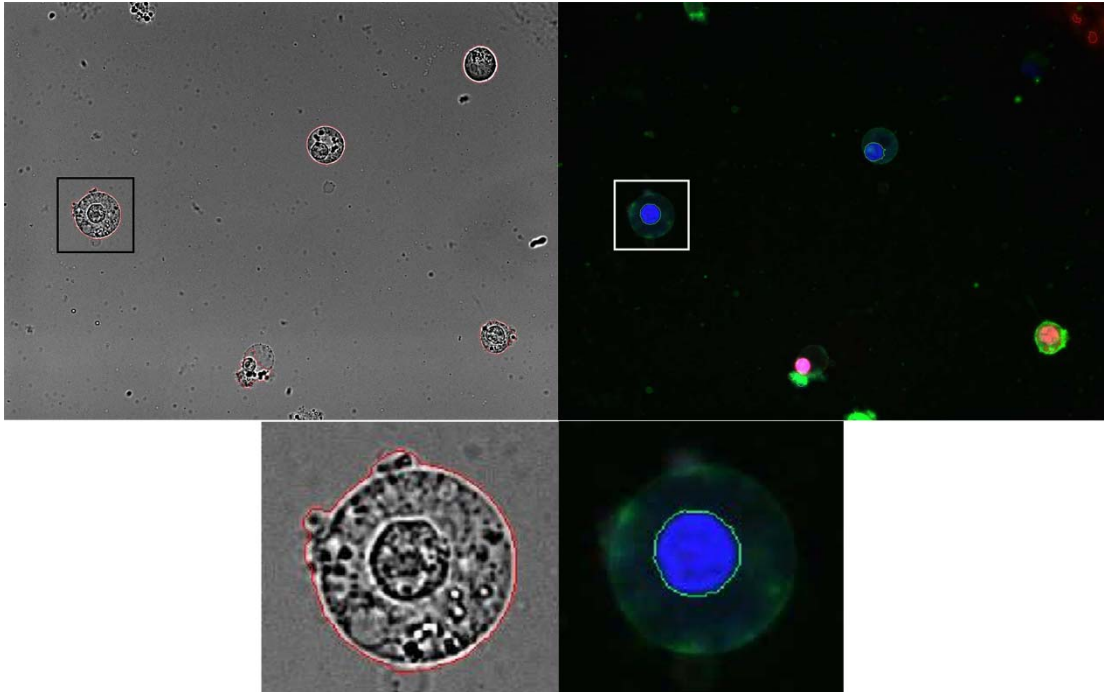


Figure 4: Segmentation of 5 cells in a light channel image and a corresponding fluorescent image, and a close-up image of a segmented early apoptotic cell

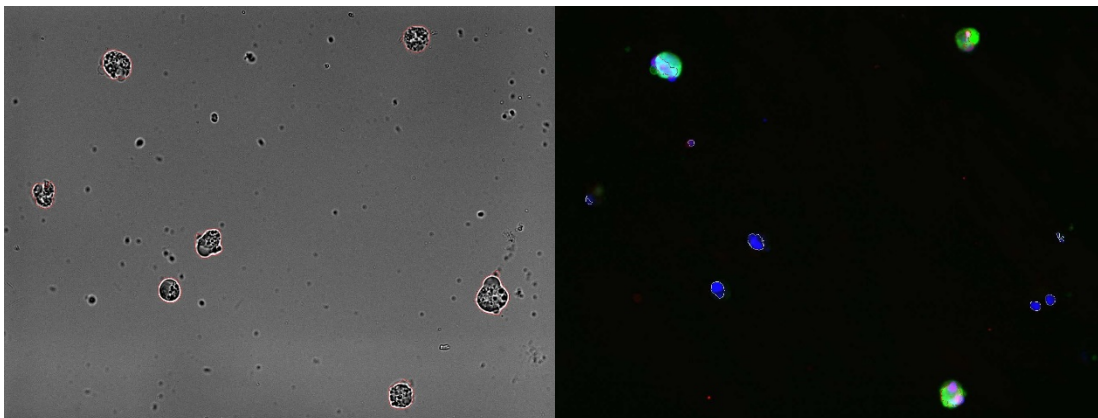


Figure 5: Segmentation of 7 cells in a light channel image and a corresponding fluorescent image

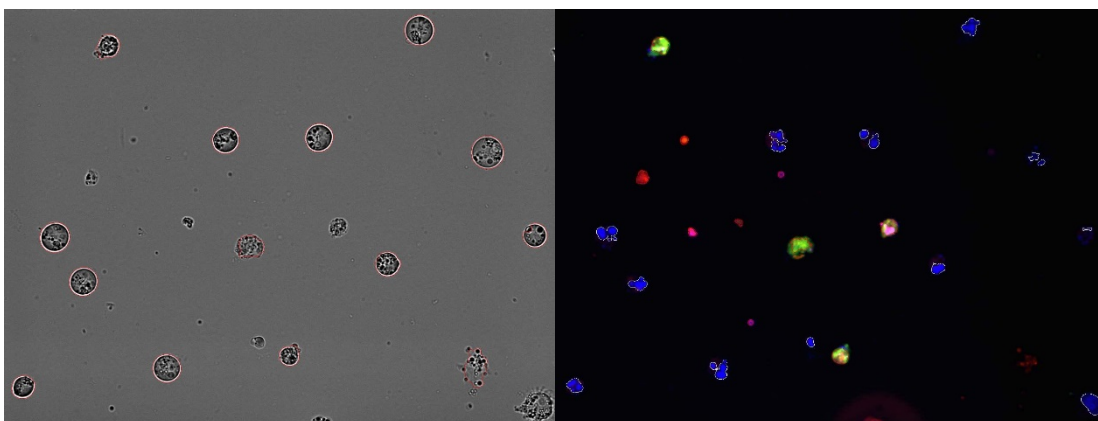


Figure 6: Segmentation of 14 cells in a light channel image and a corresponding fluorescent image

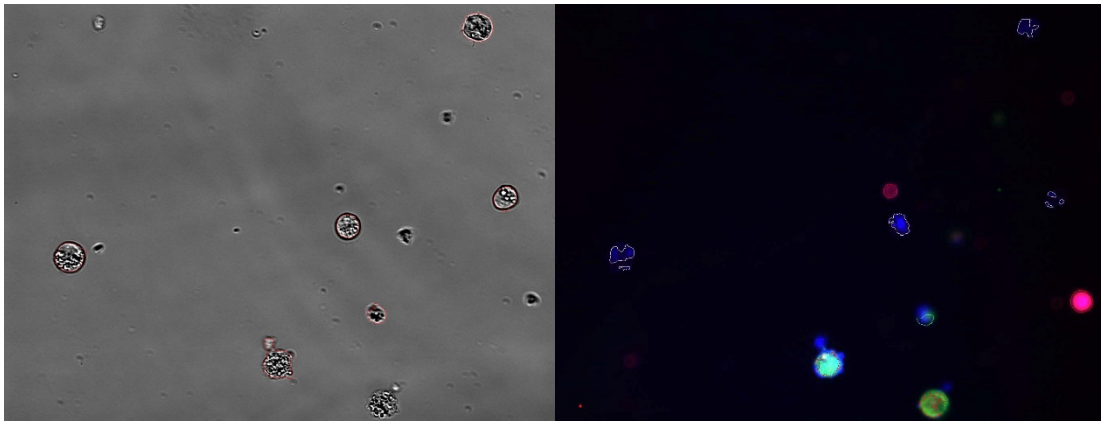


Figure 7: Segmentation of 6 cells in a light channel image and a corresponding fluorescent image

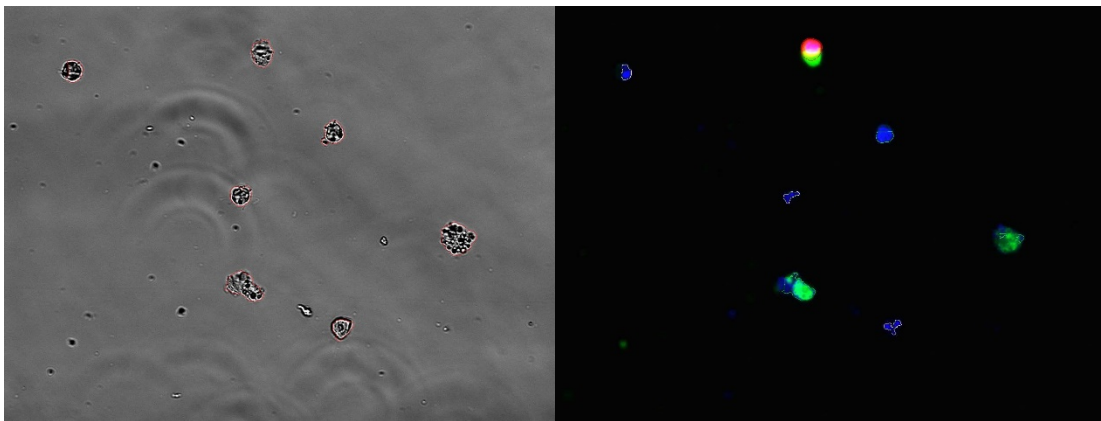


Figure 8: Segmentation of 7 cells in a light channel image and a corresponding fluorescent image

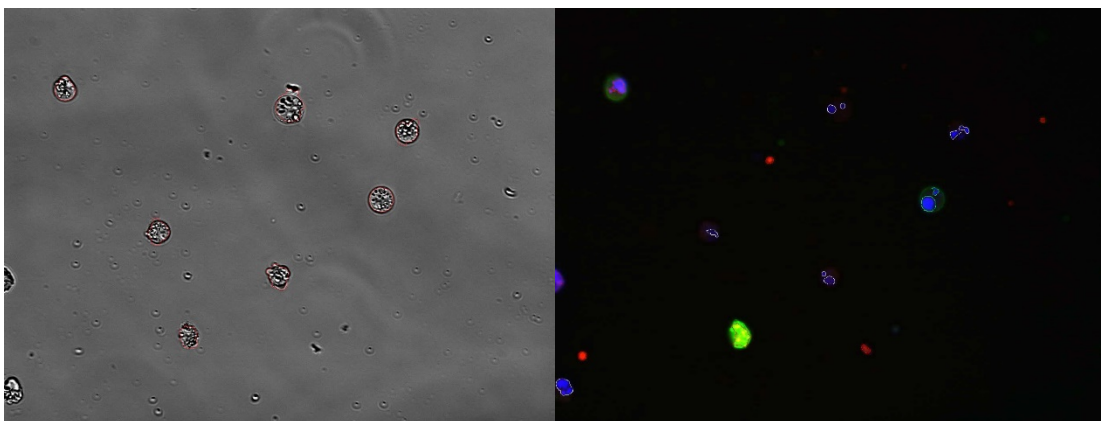


Figure 9: Segmentation of 7 cells in a light channel image and a corresponding fluorescent image

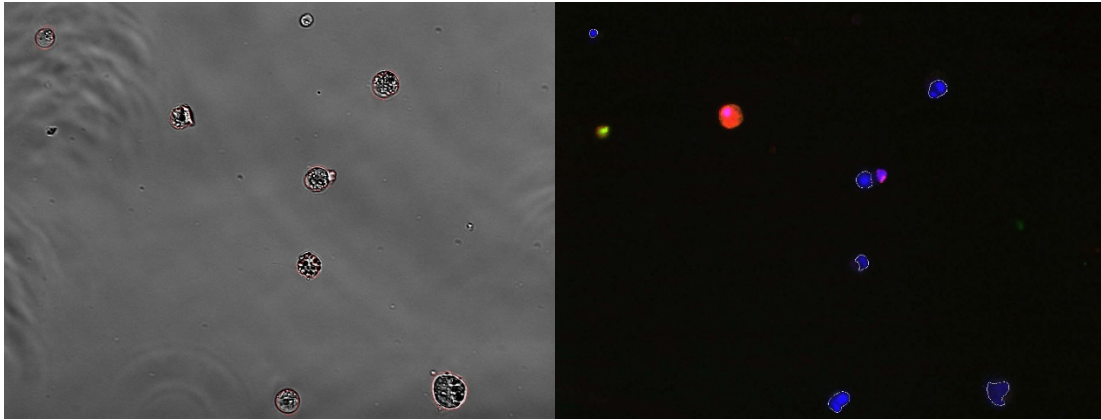


Figure 10: Segmentation of 7 cells in a light channel image and a corresponding fluorescent image