

Original article:

**PRODUCTION, PURIFICATION AND CHARACTERIZATION OF NOVEL BETA GLUCOSIDASE FROM NEWLY ISOLATED *PENICILLIUM SIMPLICISSIMUM* H-11 IN SUBMERGED FERMENTATION**

Hongzhi Bai<sup>†1</sup>, Hui Wang<sup>†2</sup>, Junde Sun<sup>1</sup>, Muhammad Irfan<sup>2</sup>, Mei Han<sup>1</sup>, Yuqian Huang<sup>1</sup>, Xiaori Han<sup>1\*</sup> Qian Yang<sup>3</sup>

<sup>1</sup> School of Land and environment, Shenyang Agricultural University, Shenyang 110866 Liaoning, P.R. China

<sup>2</sup> Bioscience and Biotechnology College, Shenyang Agricultural University, Shenyang 110866 Liaoning, P.R. China

<sup>3</sup> Center of Life Science and Technology Harbin Institute of Technology Harbin, China

† contributed equally as first authors

\* Corresponding author: Xiaori Han, hanxiaori@163.com

**ABSTRACT**

$\beta$ -Glucosidase is an important component of the cellulase complex. It not only hydrolyzes cellobiose and short-chain cellooligosaccharides to glucose, but also removes the inhibitory effect of cellobiose on the  $\beta$ -1, 4-endoglucanase and exoglucanase, thereby increasing the overall rate of cellulose biodegradation.  $\beta$ -glucosidase from culture supernatant of a fungus *Penicillium simplicissimum* was purified to homogeneity, by using ammonium sulfate fraction, Sephadex G-100 chromatography, and its properties were studied. The molecular mass of the enzyme was about 126.0 kDa, as identified by 12% SDS-PAGE. The optimum pH and temperature were 4.4 ~ 5.2 and 60 °C, respectively. The enzyme was stable in pH 5.2 ~ 6.4 and under 40 °C. Metal profile of the enzyme showed that Mn<sup>2+</sup> enhances its activity, while Cu<sup>2+</sup>, Co<sup>2+</sup> and Fe<sup>3+</sup> cause obvious inhibition. The  $K_m$  and  $V_{max}$  was 14.881 mg/ml and 0.364 mg ml/min against salicin as a Substrate. This enzyme had secondary protein structure as evidenced by FTIR spectrum.

**Keywords:**  $\beta$ -Glucosidase, *Penicillium simplicissimum*, purification, characterization

**INTRODUCTION**

Cellulases are a group of enzymes which consists of endoglucanase (EC 3.2.1.4), cellobiohydrolase (EC 3.2.1.91), and  $\beta$ -glucosidase (EC 3.2.1.21) which are mostly used for hydrolysis of lignocellulosic biomasses for ethanol production. Among these three enzymes,  $\beta$ -glucosidase is an important component of cellulase enzyme complex which is an essential for complete hydrolysis of cellulose to glucose. This enzyme induces cellulase enzyme sys-

tem by the formation of sophorose and gentiobiose (Ramani et al., 2012). This enzyme has a key attention to the scientists because most of the fungus lacks this enzyme such as *Trichoderma reesie* which is widely used in saccharification of lignocellulosic biomasses. Mostly the  $\beta$ -glucosidases from fungal sources are preferred over bacterial source due to ease in recovery process with high activity and are stable in wide range of pH and temperature (Lis and Sharon, 1993).

$\beta$ -Glucosidases are ubiquitous and can be found in bacteria, fungi, plants and animals. These are produced intracellular and extracellular in various organisms depending on the cultivation conditions. These enzymes can be classified on the basis of substrate activity and nucleotide sequence identity (Bhatia et al., 2002; Henrissat and Davies, 1997). Based on their substrate specificity, they are divided into three classes, class I which contain aryl  $\beta$ -glucosidases, class II contains true cellobiases and class III contains  $\beta$ -glucosidases having broad substrate specificity. Most of the  $\beta$ -glucosidases belongs to class III which can cleave  $\beta$  1,4;  $\beta$  1,6;  $\beta$  1,2 and  $\alpha$  1,3;  $\alpha$  1,4;  $\alpha$  1,6 glycosidic bonds (Bhatia et al., 2002; Riou et al., 1998). Henrissat and Bairoch (1996) stated that  $\beta$ -glucosidases are in family 1 and 3 from the 88 glycosyl hydrolase families. Family 1 contains  $\beta$ -glucosidases which are found in archeobacteria, plants and mammals and also exhibit  $\beta$ -galactosidase activity. Family 3 contains  $\beta$ -glucosidases which are produced from fungi, bacteria and plants having a characteristics two-domain structure (Varghese et al., 1997).

$\beta$ -Glucosidases are mostly used in cellulose conversion process but also have broad applications such as activation of phytohormones and defense against pathogens in plants (Esen, 1993), cellular signaling and oncogenesis (Bhatia et al., 2002), release of aroma from wine grapes and hydrolysis of bitter compounds during juice extraction, formation of alkyl- and aryl-glycosides by trans-glycosylation from natural polysaccharides or their derivatives and alcohols and also used in pharmaceutical, cosmetic, and detergent industries (Bhat, 2000; Gargouri et al., 2004). There are a many reports about cellulases of genus *Penicillium* but still there is no report of cellulase ( $\beta$ -glucosidase) from *Penicillium simplicissimum*. This study was aimed to produce  $\beta$ -glucosidase from this fungus species and also purification and characterization with implementation on cellulose hydrolysis.

## EXPERIMENTAL

### *Microorganism*

A strain of *Penicillium simplicissimum* H-11 was obtained from Biological Engineering Research laboratory, Center of Life Science and Technology Harbin Institute of Technology Harbin, China. The strain was grown on PDA slants and used for  $\beta$ -glucosidase enzyme production.

### *Inoculum's development*

Inoculum was developed by using the following medium (g/L)

- $(\text{NH}_4)_2\text{SO}_4$  3.0,
- $\text{FeSO}_4 \cdot 7\text{H}_2\text{O}$  0.005,
- $\text{KH}_2\text{PO}_4$  1.0,
- $\text{MnSO}_4 \cdot \text{H}_2\text{O}$  0.0016,
- $\text{MgSO}_4 \cdot 7\text{H}_2\text{O}$  0.5,
- $\text{ZnSO}_4 \cdot 7\text{H}_2\text{O}$  0.0017,
- $\text{CaCl}_2$  0.1,
- $\text{CoCl}_2$  0.002,
- $\text{NaCl}$  0.1,
- ball milled cellulose 20.

This medium was inoculated with spores of five days old *Penicillium simplicissimum* and incubated at 30 °C for three days of fermentation with agitation speed of 280 rpm. After the termination of the fermentation period, this culture broth was used as an inoculum source.

### *Enzyme production*

Medium used for enzyme production comprised of (g/L)

- wheat bran 18,
- rice straw 13.5,
- bean cake powder 4.5,
- $\text{KH}_2\text{PO}_4$  0.4,
- $\text{CaCl}_2 \cdot 2\text{H}_2\text{O}$  0.03,
- $\text{MgSO}_4 \cdot 7\text{H}_2\text{O}$  0.03.

This medium was aseptically inoculated with culture of *Penicillium simplicissimum*. Fermentation was carried out in 20 L fermentation tank at 30 °C with agitation speed of 280 rpm for four days of fermentation period. After the end of the fermentation period, the fermentation broth was collected, filtered with gauze and centrifuged

at 8000 x g for 15 min at 4 °C. The cell free supernatant obtained after centrifugation was used as a source of crude  $\beta$ -glucosidase enzyme.

### ***Assay of $\beta$ -glucosidase***

The enzyme activities were assayed using the method of Tomaz and Roche (2002). The reaction mixture consisted 0.2 ml substrate (1% Salicin), 0.1 ml enzyme solution, and 0.1 ml citrate buffer (pH 4.8). The mixture was incubated at 50 °C for 30 min. The method of DNS was used to measure the change of sugar. One unit of the activity (U) was defined as the amount of the enzyme that liberated 1  $\mu$ g sugar from the substrate per minute under standard assay conditions. Protein content was estimated by Bradford (1976) method using BSA as a standard.

### ***Purification of $\beta$ -glucosidase***

#### ***Ammonium sulphate precipitation***

Cell free supernatant was precipitated by adding ammonium sulphate at different saturation levels (30–90 %). After each addition, the enzyme solution was stirred for 1 h at 4 °C. The protein precipitated was collected by centrifugation at 8000 x g for 15 min at 4 °C and resuspended in minimum volume of 0.05 M citrate buffer, pH 4.8. To get the concentrated enzyme suspension. After that the enzyme suspension was dialyzed against same buffer with 3-5 changes.

#### ***Sephadex G-100 gel filtration chromatography***

The concentrated enzyme sample was purified on sephadex G-100 column (2 cm x 120 cm). The sephadex column was equilibrated with 0.05 M Citrate buffer, pH 4.8. The dialyzed enzyme sample was loaded on to sephadex G-100 column eluted with the same buffer. Fractions (each of 5 ml/tube) were collected at a flow rate of 30 ml/h by fraction collector. The fractions showing absorbance at 280 nm was analyzed for  $\beta$ -glucosidase activity and the active fractions were pooled dialyzed and then lyophilized.

The lyophilized enzyme sample was stored at -20 °C for further studies.

#### ***SDS-polyacrylamide gel electrophoresis***

SDS-PAGE (12 %) was performed according to the method described by Laemmli (1970) using a mini slab gel apparatus. The molecular weight was determined by interpolation from linear semi-logarithmic plot of relative molecular weight versus the *R<sub>f</sub>* value (relative mobility) using standard molecular weight markers (low molecular weight markers, Pharmacia).

#### ***HPLC analysis of $\beta$ -glucosidase***

A Hypersil ODS column (4.6 mm x 100 mm) of High Performance Liquid Chromatography (Agilent 1100 Series) was used to test the enzyme purity. The 5  $\mu$ L sample volume was injected and separated using the solvent system of acetonitrile-water (70:30) at a flow rate of 1.0 ml/min. A highly sensitive MWD UV detector was used to read the absorbance.

#### ***FTIR analysis of $\beta$ -glucosidase***

Mixture of sample and KBr (5 % sample, 95 % KBr) were passed into a disk for Fourier Transform Infrared Spectroscopy (Magna-IR 560 ESP, FTIR Nicolet Company USA) measurement (Irfan et al., 2011). The spectra were recorded with 32 scans in the frequency range of 4000 – 400  $\text{cm}^{-1}$  with a resolution of 4  $\text{cm}^{-1}$ . Disks were prepared in triplicates to obtain a constant spectrum.

#### ***UV-absorption spectrum of $\beta$ -glucosidase***

Ultraviolet absorption spectrum of enzyme was recorded in aqueous solution with double beam spectrophotometer (VARIAN Cary 4000 UV-VIS spectrophotometer, USA) at ambient temperature (30 °C).

### ***Characterization of enzyme***

#### ***Effect of temperature on activity and stability of $\beta$ -glucosidase***

The effect of temperature on activity of  $\beta$ -glucosidase was determined by incubating crude enzyme mixture in 1% Salicin in

10 mM Citrate buffer (pH 5.0) at temperatures between 40 to 90 °C with regular interval of 5 °C. Enzyme activity was assayed by DNS method at different temperatures as described above. Thermostability studies of the enzyme were conducted by pre-incubating the enzyme solution at 30, 40, 50, 60, 70 and 80 °C for 4 h. After this incubation the enzyme activity was checked by standard assay procedure.

#### *Effect of pH on activity and stability of $\beta$ -glucosidase*

The optimum pH for the enzyme was determined by incubating enzyme with substrate (1% Salicin) prepared in 0.05 M citrate buffer (pH 2.8, 3.2, 3.6, 4.0, 4.4, 4.8, 5.2, 5.6, 6.0, 6.4 and 6.8). To check the stability at different pH, the enzyme was placed in different pH buffers at room temperature (30 °C) for 12 h. After that the enzyme activity was measured using standard assay procedure.

#### *Effect of various metal ions on activity of $\beta$ -glucosidase*

Various metal ions including  $\text{Sn}^{2+}$ ,  $\text{Cu}^{2+}$ ,  $\text{Li}^+$ ,  $\text{Zn}^{2+}$ ,  $\text{Co}^{2+}$ ,  $\text{Ca}^{2+}$ ,  $\text{Mn}^{2+}$ ,  $\text{Fe}^{2+}$ ,  $\text{Fe}^{3+}$  and  $\text{Mg}^{2+}$  was applied to check the optimum activity of enzyme. Each metal ion was used at a concentration of 10 mM.

#### *Substrate specificity*

Effects of various substrates such as Xinghua filter paper, microcrystalline cellulose (1 %), xylan (1 %), CMC-Na (1 %), pNPG (1 %), pNPC (1 %), Chitin (1 %) and Salicin (0.5 %) on purified CMCase activity were determined. The  $\beta$ -glucosidase towards salicin was taken as control.

#### *Enzyme kinetics*

The  $K_m$  and  $V_{max}$  of  $\beta$ -glucosidase were calculated by linear regression analysis by Lineweaver-Burk plot (double reciprocal plot) using various concentration of Salicin (5, 10, 15, 20, 25, 30, 35, 40, 45 and

50 mg/ml). The experiments were carried out in triplicates and then the activity measured according to the standard assay conditions.

#### *Enzymatic hydrolysis*

Hydrolysis of cellubiose was performed in 500 Erlenmeyer flask at 50 °C. One gram of cellubiose was dissolved in 100 ml of 0.05 M citrate buffer pH 5 and 0.5 g of  $\beta$ -glucosidase powder was also added and incubated at 50 °C for 1 h. After 1 h sample was taken and analyzed by high performance liquid chromatography. 15  $\mu\text{L}$  of sample was injected into carbohydrate column (4.6  $\times$  250mm) using solvent system of acetonitrile water (75:25) with flow rate of 1.4 mL/min. RI detector (refractive index) was used for detection and each sample was operated in triplicates to obtain constant results.

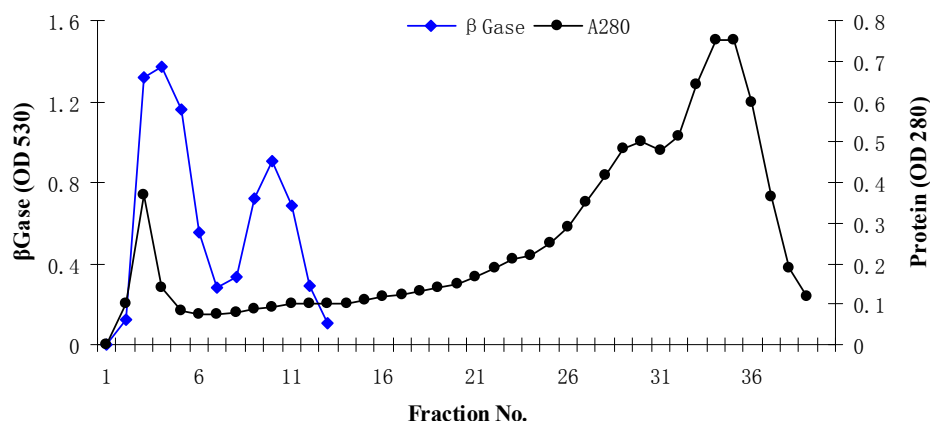
## RESULTS AND DISCUSSION

### *Purification of $\beta$ -glucosidase*

The enzyme  $\beta$ -glucosidase was produced from *Penicillium simplicissimum* by submerged fermentation at 30 °C for 72 h of fermentation period. Table 1 summarizes the purification steps of  $\beta$ -glucosidase enzyme. The crude enzyme solution was fractionated with ammonium sulphate fractionation. After 80% ammonium sulphate saturation, the enzyme suspension was dialyzed using citrate buffer (pH 4.8) for 48 h at 4 °C. The dialyzed enzyme solution was loaded on to a sephadex G-100 column. The elution profile of the enzyme solution was shown in Figure 1. The elution profile showed that there are two peaks, peak 1 and peak 2. Peak 1 exhibits the strong  $\beta$ -glucosidase activity as compared to the peak 2. This peak 1 yielded 58.61 % enzyme activity with purification fold of 8.61 having specific activity of 11043.44 U/mg.

**Table 1:** Purification profile of  $\beta$ -glucosidase from *P. simplicissimum* H11

Purification steps	total activity (IU)	total protein (mg/ml)	specific activity (U·mg <sup>-1</sup> )	purification folds	yield (%)
Crude enzyme	3014.82	2.35	1282.90	1.00	100.0
Amm. Sulphate ppt.	1502.5	1.06	1417.3	1.12	49.8
Sephadex G-100	1766.95	0.16	11043.44	8.61	58.61



**Figure 1:** Sephadex G-100 elution profile of  $\beta$ -glucosidase

The specific activity was improved from 1282.90 to 11043.44 U/mg. These results indicated that sephadex G-100 column chromatography yielded pure enzyme. So, the fractions of peak 1 was pooled and lyophilized for further use. Elshafei et al., (2011) reported that both sephadex G-100 and sephadex G-200 were best for the purification of  $\beta$ -glucosidase enzyme from *Aspergillus terreus* NRRL 265. Chauve et al., (2010) purified  $\beta$ -glucosidase enzyme from two fungal species with purity yield of 95 % and purification factor of 53 using anion exchange chromatography. In another study (Liu et al., 2012) by using sephadex G-100, purification fold of 5.1 was obtained with recovery of 20 %.

#### **Purity check of $\beta$ -glucosidase**

The enzyme solution obtained from sephadex G-100 column chromatography was converted into powder form by lyophilization. This enzyme preparation was further checked by SDS-PAGE to confirm the homogeneity. The results (Figure 2) indicated

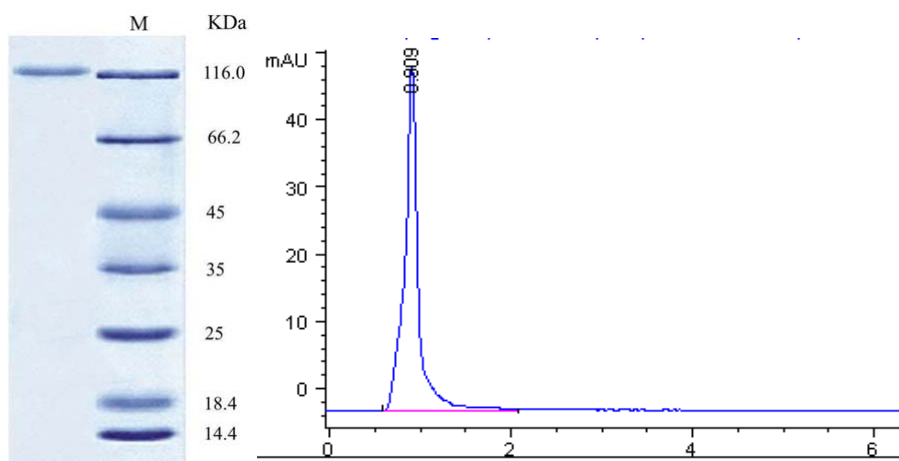
that SDS-PAGE showed a single band which confirms the homogeneous enzyme preparation. The molecular weight of the  $\beta$ -glucosidase enzyme was determined by plotting a graph between linear logarithms of relative molecular mass versus the  $R_f$  value. From this calculation it was found that the  $\beta$ -glucosidase exhibits the molecular mass of 126.0 kDa.

$\beta$ -Glucosidase enzyme from *Penicillium funiculosum* NCL1, *Penicillium purpurogenum* KJS506 and *Penicillium occitanis* had molecular mass of 120 kDa, 89.6 kDa and 98 kDa respectively (Ramani et al., 2012; Jeya et al., 2010; Bhiri et al., 2008).  $\beta$ -Glucosidase enzyme from *A. terreus* NRRL 265 exhibits molecular mass of 116 kDa (Elshafei et al., 2011). To check the further purity of the  $\beta$ -glucosidase enzyme, the enzyme solution was loaded on to a Hypersil ODS column of High Performance Liquid Chromatography. Results (Figure 2) reveals that the enzyme showed a single peak at retention time of 1 min confirming that the enzyme solution was pure.

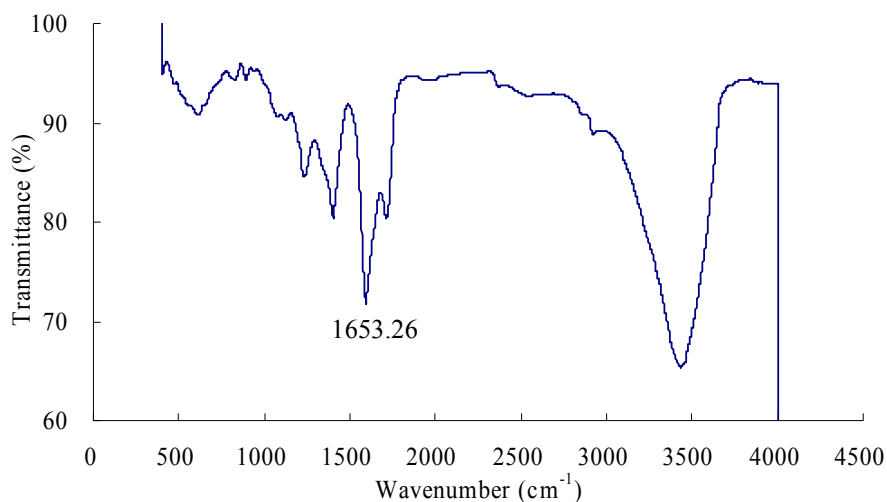
### FTIR analysis of the $\beta$ -glucosidase

The purified  $\beta$ -glucosidase enzyme was characterized by FTIR spectroscopy (Figure 3). The IR spectrum of the purified enzyme indicated that there are some peaks in  $611.00 \sim 615.00 \text{ cm}^{-1}$  regions which belong to the secondary amide of the amide V which is due to the out of plan NH bending (Elliot and Ambrose, 1950). The peaks at  $1240.00 \text{ cm}^{-1}$  and  $1400.00 \text{ cm}^{-1}$  represents the secondary amide III bands and primary amide of the amide III bands which is CN stretching vibration and NH bending vibration respectively.  $\beta$ -Glucosidase enzyme had a strong absorption peak at  $1653.26 \text{ cm}^{-1}$ , which is a characteristic peak of the  $\alpha$ -helix, is caused by the symmetric stretching vibra-

tion of C = O stretching vibration and NH bond which is confirmed by many studies (Dong et al., 1992; Susi and Byler, 1986; Byler and Susi, 1986). The bands between  $1700 - 1600 \text{ cm}^{-1}$  are considered to be the most sensitive regions for protein secondary structural components (amide I band) and these peaks are due to the C = O stretch vibrations of the peptide linkages (Kong and Yu, 2007). The bands at  $3100 \text{ cm}^{-1}$  and  $3300 \text{ cm}^{-1}$  represents the amide B and amide A linkages which was due to the NH stretching (Elliot and Ambrose, 1950; Krimm and Bandekar, 1986; Banker 1992; Miyazawa et al., 1956).



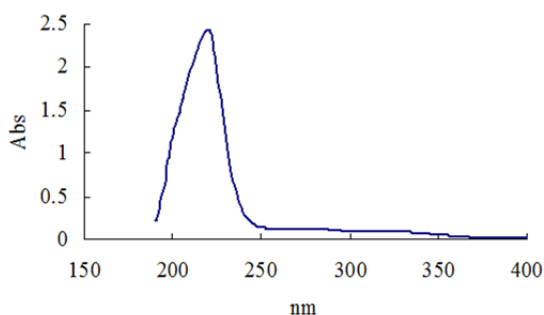
**Figure 2:** Purity check of  $\beta$ -glucosidase (a) SDS-PAGE and (b) HPLC chromatogram



**Figure 3:** FTIR spectrum of  $\beta$ -glucosidase enzyme

### Ultraviolet absorption spectrum of $\beta$ -glucosidase

The purified  $\beta$ -glucosidase enzyme solution was used for UV absorption spectrum by using buffer as control, the full band scan detection on a UV spectrometer. The results (Figure 4) indicated that  $\beta$ -Glucosidase enzyme showed a maximum absorption peak at 219.0 nm indicating the presence of an aromatic side chain, especially the presence of tyrosine, tryptophan, phenylalanine, or their residues. The purified cellulase enzyme from *Aspergillus oryzae* ITTC-4857.01 exhibit maximum absorption peaks at 270 nm (Begum and Absar, 2009) and 290 nm (Begum, 2005) indicating some structural resemblance of the enzyme.

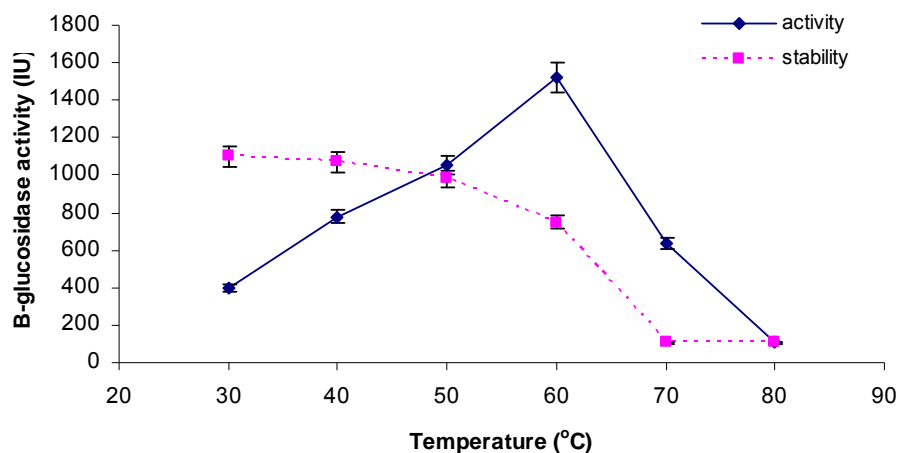


**Figure 4:** Ultraviolet absorption spectrum of  $\beta$ -glucosidase produced from *Penicillium simplicissimum*

### CHARACTERIZATION OF $\beta$ -GLUCOSIDASE

#### Effect of temperature on activity and stability

The activities of the  $\beta$ -glucosidase were assayed at various temperatures ranging from 30 °C, 40 °C, 50 °C, 60 °C, 70 °C and 80 °C to check the optimum temperature. Results (Figure 5) indicated that enzyme activity was increased with increase in temperature and peak activity was observed at 60 °C. After that, as the temperature was increased from 60 °C to 80 °C, there was a sharp decline in enzyme activity from  $1523.0 \pm 1.75$  IU to  $106.1 \pm 0.70$  IU respectively. Thermostability profile of the enzyme revealed that the  $\beta$ -glucosidase enzyme was stable at temperature up to 50 °C for 4 h of pre-incubation period. But higher temperature up to 80 °C causes denaturation of the enzyme. This thermostability of the enzyme at 50 °C for 4 h is very beneficial for enzymatic hydrolysis of the lignocellulosic biomasses. Our findings were similar to the others who also reported that most of the species of this genus *Penicillium* (*Penicillium funiculosum* NCL1, *Penicillium bra-*



**Figure 5:** Effect of temperature on  $\beta$ -glucosidase activity and stability

*silianum*, *Penicillium occitanis* and *Penicillium funiculosum*) have optimum temperature of 60 °C (Ramani et al., 2012; Krogh et al., 2010; Bhiri et al., 2008; Karboune et al., 2008) while one species, *Penicillium purpurogenum* KJS506 exhibits optimum temperature of 65 °C (Jeya et al., 2010) respectively. In a recent report (Bhatti et al., 2013)  $\beta$ -glucosidase enzyme from *Fusarium saloni* had optimum temperature and thermostability at 65 °C.

### Effect of pH on activity and stability

The activity of the enzyme was assayed using citrate buffer at various pH (2.8, 3.2, 3.6, 4.0, 4.4, 4.8, 5.2, 5.6, 6.0, 6.4 and 6.8) at 50 °C for 30 min. The result (Figure 6) indicated that the optimum pH of  $\beta$ -glucosidase was about from 4.4 to 5.2. Further increase or decrease of pH beyond these resulted decline in enzyme activity. To check the pH stability of the enzyme, the enzyme solution was pre-incubated at various pH for 12h at room temperature (i.e. 30 °C). The enzyme was stable in pH range of 4 to 6.8.  $\beta$ -Glucosidases from various species of *Penicillium* have optimum pH range of 4.0 - 6.0 (Ramani et al., 2012; Krogh et al., 2010; Jeya et al., 2010; Bhiri et al., 2008; Karboune et al., 2008).  $\beta$ -Glucosidase enzyme from *Penicillium funiculosum* was stable in pH range of 2.5 - 6.0 retaining 80 % of the activity after 2 h

incubation at 25 °C (Karboune et al., 2008). In another report (Bhiri et al., 2008)  $\beta$ -glucosidase enzyme from *Penicillium occitanis* was stable in pH range from 3 to 9 after 24 h incubation at 4 °C. Table 2 also compares the optimum pH of various species of the genus *Penicillium*. So, these findings indicated that the  $\beta$ -Glucosidase enzyme from *Penicillium* species exhibits a wide range of pH stability.

### Effect of different metal ion

To check the effect of metal ions (10 mmol/L) the enzyme was treated with different metals for 30 min at 50 °C. After that the enzyme activity was determined using standard procedure. The results (Figure 7) showed that  $Mn^{2+}$  (120.46 %),  $Ca^{2+}$  (109.14 %),  $Sn^{2+}$  (106.50) and  $Li^+$  (104.91) were the activators while  $Cu^{2+}$  (29.08 %) and  $Fe^{2+}$  (73.05) were the inhibitors of the  $\beta$ -glucosidase enzyme respectively (Table 3). Our findings were mostly in accordance with other studies.  $\beta$ -glucosidases of other fungal species were strongly activated by  $Zn^{2+}$  (Ramani et al., 2012),  $Mn^{2+}$ ,  $Mg^{2+}$  (Chen et al., 2012),  $Mn^{2+}$ ,  $Fe^{2+}$  (Ma et al., 2011) and strongly inhibited by  $Hg^{2+}$ ,  $Cu^{2+}$  (Bhiri et al., 2008),  $Ag^+$ ,  $Hg^{2+}$  (Elshafei et al., 2011) and  $Cu^{2+}$ ,  $Pb^{2+}$ ,  $Cd^{2+}$  (Ma et al., 2011) respectively.

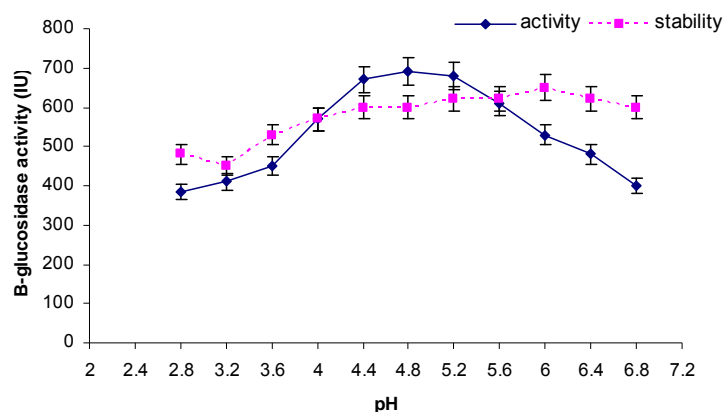


Figure 6: Effect of pH on  $\beta$ -glucosidase activity and stability



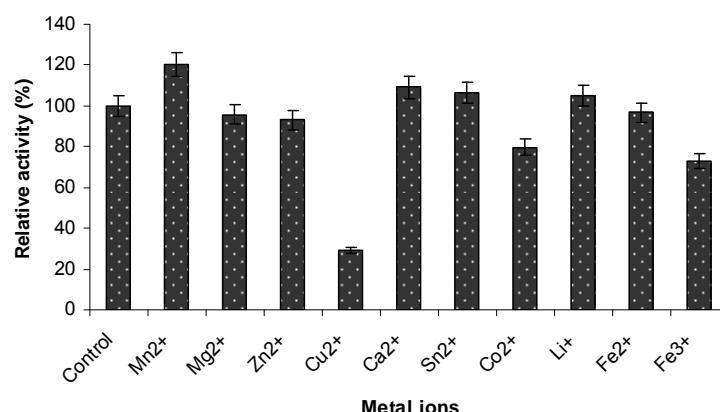
### Substrate-specificity of the enzyme

The purified  $\beta$ -glucosidase enzyme was used to check the substrate specificity by reacting with various substrates like Xinghua filter paper, microcrystalline cellulose (1%), xylan (1%), CMC-Na (1%), pNPG (1%), pNPC (1%), Chitin (1%) and Salicin (0.5%). From the results (Table 3) it was observed that the enzyme  $\beta$ -glucosidase can

effectively hydrolyze the Salicin ( $744.58 \pm 0.12$  IU) followed by microcrystalline cellulose ( $117.27 \pm 0.75$  IU). This enzyme can degrade filter paper, pNPG, pNPC and Chitin up to some extent but it had no activity against CMC-Na. Very similar findings were also reported by Ramani et al. (2012)

**Table 2:** Comparison of optimum pH and temperature of some species of genus *Penicillium*

Fungus	opt. pH	opt. Temp. (°C)	reference
<i>Penicillium simplicissimum</i> H-11	4.4 - 5.2	60	This study
<i>Penicillium funiculosum</i> NCL1	4.0 - 5.0	60	Ramani et al. (2012)
<i>Penicillium brasilianum</i>	4.0 - 6.0	60	Krogh et al. (2010)
<i>Penicillium purpurogenum</i> KJS506	5.0	65	Jeya et al. (2010)
<i>Penicillium occitanis</i>	4.5	60	Bhiri et al. (2008)
<i>Penicillium funiculosum</i>	4.5	60	Karboune et al. (2008)



**Figure 7:** Effect of metal ions on  $\beta$ -glucosidase activity

**Table 3:** Substrate specificities of  $\beta$ -glucosidase

Substrates	enzyme activity (IU)
Xinghua filter paper	$14.37 \pm 0.34$
Microcrystalline cellulose (1%)	$117.27 \pm 0.75$
xylan (1%)	$0.48 \pm 0.12$
CMC-Na (1%)	$0.00 \pm 0.00$
pNPG (1%)	$14.89 \pm 0.40$
pNPC (1%)	$14.36 \pm 0.10$
Chitin (1%)	$3.49 \pm 0.03$
Salicin (0.5%)	$744.58 \pm 0.12$

indicating Salicin as a best substrate for  $\beta$ -glucosidase activity. Various studies suggested that pNPG was good substrate for  $\beta$ -glucosidase activity (Elshafei et al., 2011; Liu et al., 2012.).

### Enzyme kinetics

The kinetic parameters  $K_m$  and  $V_{max}$  of the  $\beta$ -glucosidase enzyme was estimated by Lineweaver-Burk plot by using various concentrations of salicin as a substrate. The main purpose of this kinetics is to check the catalytic efficiency of proteins. Results (Figure 8) revealed that the  $K_m$  and the  $V_{max}$  of  $\beta$ -glucosidase were 14.881 mg/ml and 0.364 mg/ml, respectively.  $K_m$  is the dissociation constant which represent the affinity of substrate in enzyme substrate (ES) complex. If the  $K_m$  value is low, it means that enzyme had a stronger affinity with substrate.  $\beta$ -glucosidase enzyme from *Penicillium purpurogenum* KJS506 had a  $V_{max}$  value of 934 U mg/protein (Jeya et al., 2010). Ramani et al., (2012) reported  $K_m$  value of 0.057 mM from *Penicillium funiculosum* NCL1. *Penicillium brasilianum* also produced  $\beta$ -glucosidase enzyme which have  $K_m$  and  $V_{max}$  value of 0.09 mM and 76  $\mu\text{mol min}^{-1}\text{mg}^{-1}$  respectively (Krogh et al., 2010). In another study (Bhiri et al., 2008) the  $\beta$ -

glucosidase enzyme of *Penicillium occitanis* has  $K_m$  and  $V_{max}$  value of 0.37 mM and 0.55  $\mu\text{molmin}^{-1}\text{mg}^{-1}$  respectively. *Fusarium saloni*  $\beta$ -glucosidase enzyme possessed  $K_m$  and  $V_{max}$  value of 1 mM and 55.6  $\mu\text{molmin}^{-1}$  respectively (Bhatti et al., 2013).

### Enzymatic hydrolysis

The efficiency of the  $\beta$ -glucosidase enzyme was checked by hydrolyzing the cellobiose to glucose. Figure 9 illustrated the HPLC chromatograms of standard glucose and cellobiose (upper graph) and experimental (lower graph) study. Results indicated that this enzyme efficiently hydrolyze the cellobiose and produced 10 mg/ml of glucose in one hour of incubation at 50 °C. This results were comparable to Mutalik et al., (2012) who reported that cellulase enzyme preparation from *Ruminococcus albus* can produce 17.4 mg/ml of glucose from 3.5 % substrate (Sugarcane bagasse) after 66 h of saccharification at 39 °C. Complete hydrolysis of cellulose to glucose is done by the action of endoglucanases, cellulohydrolases and  $\beta$ -glucosidase (Olsson et al., 2004; Wilson and Irwin, 1999).

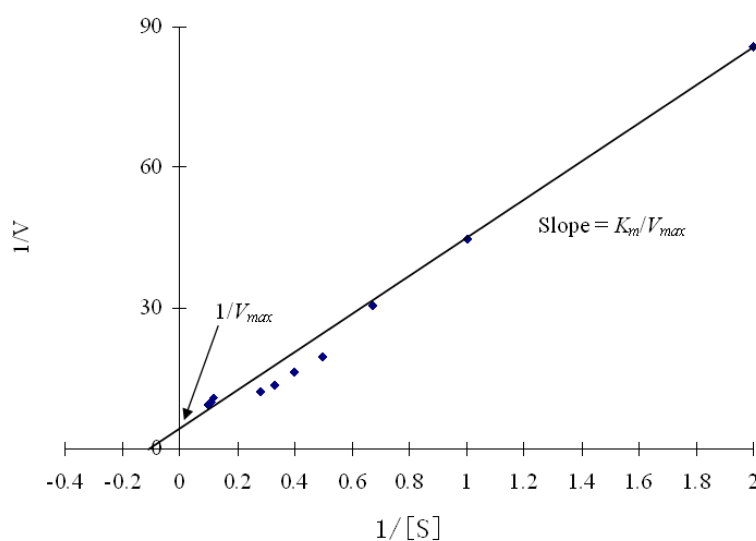
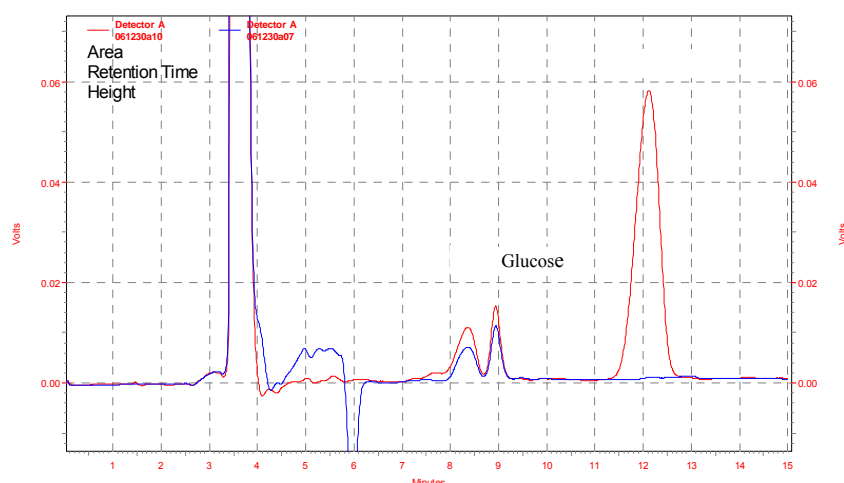


Figure 8: Lineweaver-Burk plots of  $\beta$ -glucosidase against salicin



**Figure 9:** Enzymatic degradation of cellobiose by  $\beta$ -glucosidase enzyme produced from *Penicillium simplicissimum* H-11, Red line indicates standard and blue line indicates experimental.

Crystalline nature of cellulose hindered the enzymatic hydrolysis of lignocellulosic material and this is insoluble in water (Olsson et al., 2005). But here the nature of the substrate, source of enzyme and saccharification conditions played a pivotal role to make the process cost effective particularly in ethanol production.

#### ACKNOWLEDGMENTS

This research work was supported by Shenyang Agricultural University Youth Fund (20081019); Shenyang Agricultural University Postdoctoral Fund (82523) in National Engineering Laboratory for Efficient Utilization of Soil and Fertilizer Resources and Plant Nutrition and new fertilizer academic innovation team project

#### REFERENCES

Banker J. Amide modes and protein conformation. *Biochim Biophys Acta* 1992;1120: 123–43.

Begum MF. Screening of Aspergilli from cellulosic waste materials and studies on their cellulolytic properties. Ph.D. thesis. Bangladesh: University of Rajshahi, Department of Botany, 2005.

Begum MF, Absar N. Purification and characterization of intracellular cellulase from *Aspergillus oryzae* ITCC-4857.01. *Mycobiology* 2009;37:121-7.

Bhat MK. Cellulases and related enzymes in biotechnology. *Biotechnol Adv* 2000; 18:355–83.

Bhatia Y, Mishra S, Bisaria VS. Microbial  $\beta$ -glucosidases: cloning, properties, and applications. *Crit Rev Biotechnol* 2002;22: 375-407.

Bhatti HN, Batool S, Afzal N. Production and characterization of a novel  $\beta$ -glucosidase from *Fusarium solani*. *Int J Agric Biol* 2013;15:140-4.

Bhiri F, Chaabouni SE, Limam F, Ghrir R, Marzouki N. Purification and biochemical characterization of extracellular beta-glucosidases from the hypercellulolytic Pol6 mutant of *Penicillium occitanis*. *Appl Biochem Biotechnol* 2008;149:169-82.

- Bradford MM. A rapid and sensitive method for the quantitation of microgram quantities of protein utilizing the principle of protein-dye binding. *Analyt Biochem* 1976;72:248.
- Byler DM, Susi H. Examination of the secondary structure of proteins by deconvolved FTIR spectra. *Biopolymer* 1986;25:469–87.
- Chauve M, Mathis H, Huc D, Casanave D, Monot F, Ferreira NL. Comparative kinetic analysis of two fungal  $\beta$ -glucosidases. *Biotechnol Biofuels* 2010;3:3.
- Chen H, Chen Y, Lu MJ, Chang J, Wang HC, Ke H et al. A highly efficient  $\beta$ -glucosidase from the buffalo rumen fungus *Neocallimastix patriciarum* W5. *Biotechnol Biofuels* 2012;5:24.
- Dong A, Caughey B, Caughey WS, Bhat KS, Coe JE. Secondary structure of the pentraxin female protein in water determined by infrared spectroscopy: Effects of calcium and phosphorylcholine. *Biochemistry* 1992;31:9364–70.
- Elliott A, Ambrose EJ. Structure of synthetic polypeptides. *Nature* 1950;165: 921–2.
- Elshafei AM, Hassan MM, Morsi NM, Elghonamy DH. Purification and some kinetic properties of  $\beta$ -glucosidase from *Aspergillus terreus* NRRL 265. *Afr J Biotechnol* 2011;10:19556-69.
- Esen A.  $\beta$ -glucosidases: Overview, biochemistry and molecular biology (pp 1-14). Washington DC, USA: American Chemical Society, 1993.
- Gargouri M, Smaali I, Maugard T, Legoy MD, Marzouki N. Fungus  $\beta$ -glucosidases. Immobilization and use in alkyl- $\beta$ -glycoside synthesis. *J Mol Catal B Enzym* 2004; 29:89–94.
- Henrissat B, Bairoch A. Updating the sequence-based classification of glycosyl hydrolases. *Biochem J* 1996;316:695-6.
- Henrissat B, Davies GJ. Structural and sequence based classification of glycosyl hydrolases. *Curr Opin Struc Biol* 1997;7:637-44.
- Irfan M, Syed Q, Abbas S, GulSher M, Baig S, Nadeem M. FTIR and SEM analysis of thermo-chemical fractionated of Sugarcane Bagasse. *Turk J Biochem* 2011;36: 322-8.
- Jeya M, Joo AR, Lee KM, Tiwari MK, Lee KM, Kim SH et al. Characterization of beta-glucosidase from a strain of *Penicillium purpurogenum* KJS506. *Appl Microbiol Biotechnol* 2010;86:1473-84.
- Karboune S, Geraert PA, Kermasha S. Characterization of selected cellulolytic activities of multi-enzymatic complex system from *Penicillium funiculosum*. *J Agric Food Chem* 2008;56:903-9.
- Kong J, Yu S. Fourier transform infrared spectroscopic analysis of protein secondary structures. *Acta Biochim Biophys Sin* 2007;39:549–59.
- Krimm S, Bandekar J. Vibrational spectroscopy and conformation of peptides, polypeptides, and proteins. *Adv Protein Chem* 1986;38:181–364.
- Krogh KB, Harris PV, Olsen CL, Johansen KS, Hojer-Pedersen J, Borjesson J et al. Characterization and kinetic analysis of a thermostable GH3 beta-glucosidase from *Penicillium brasilianum*. *Appl Microbiol Biotechnol* 2010;86:143-54.
- Laemmli UK. Cleavage of structural proteins during the assembly of the head of bacteriophage T4. *Nature* 1970;227:680-5.

- Lis H, Sharon N. Protein glycosylation. *Eur J Biochem* 1993;218:1–27.
- Liu D, Zhang R, Yang X, Zhang Z, Song S, Miao Y et al. Characterization of a thermostable  $\beta$ -glucosidase from *Aspergillus fumigatus* Z5, and its functional expression in *Pichia pastoris* X33. *Microb Cell Fact* 2012; 11:25.
- Ma S, Leng B, Xu X, Zhu X, Shi Y, Tao Y, et al. Purification and characterization of  $\beta$ -1,4-glucosidase from *Aspergillus glaucus*. *Afr J Biotechnol* 2011;10:19607-14.
- Miyazawa T, Shimanouchi T, Mizushima S. Characteristic infrared bands of mono-substituted amides. *J Chem Phys* 1956;24: 408.
- Mutalik S, Kumar CSV, Swamy S, Manjappa S. Hydrolysis of lignocellulosic feedstock by *Ruminiococcus albus* in production of biofuel ethanol. *Ind J Biotechnol* 2012; 11:453-7.
- Olsson L, Jorgensen H, Krogh KBR, Roca C. Bioethanol production from lignocellulosic material. In: Dumitriu S (ed.): *Polysaccharides: structural diversity and functional versatility*, 2<sup>nd</sup> ed (pp 957-93). New York: Marcel Dekker, 2005.
- Ramani G, Meera B, Vanitha C, Rao M, Gunasekaran P. Production, purification, and characterization of a  $\beta$ -glucosidase of *Penicillium funiculosum* NCL1. *Appl Biochem Biotechnol* 2012;167:959-72.
- Riou C, Salmon JM, Vallier MJ, Gunata Z, Barre P. Purification, characterization, and substrate specificity of a novel highly glucose-tolerant  $\beta$ -glucosidase from *Aspergillus oryzae*. *Appl Environ Microbiol* 1998; 64:3607-14.
- Susi H, Byler DM. Resolution-enhanced fourier transform infrared spectroscopy of enzymes. *Methods Enzymol* 1986;130: 290–311.
- Tomaz T, Roche A. Hydrophobic interaction, chromatography of *trichoderma reesei* cellulase on polypropylene glycol-sepharose. *Sep Sci Technol* 2002;37:1-11.
- Varghese JN, Hrmova M, Fincher GB. Three-dimensional structure of a barley  $\beta$ -D-glucan exohydrolase, a family 3 glycosyl hydrolase. *Structure* 1997;7:179-90.
- Wilson DB, Irwin DC. Genetics and properties of cellulases. In: Tsao GT (ed.): *Recent progress in bioconversion of lignocellulosics* (pp 1-21). Berlin: Springer, 1999.